	<p>TRAVIS COUNTY WATER CONTROL AND IMPROVEMENT DISTRICT No. 17</p> <p>STANDARD DETAILS</p>	<p>STANDARD 5 1/4" FIRE HYDRANT ASSEMBLY INSTALLATION</p> <p>(1 OF 2)</p>	
	<p>ADOPTED:</p> <p>07/01/2025</p>	<p>THE ARCHITECT/ENGINEER ASSUMES RESPONSIBILITY FOR APPROPRIATE USE OF THIS STANDARD.</p>	<p>DETAIL NO.</p> <p>W01</p>


NOTES:

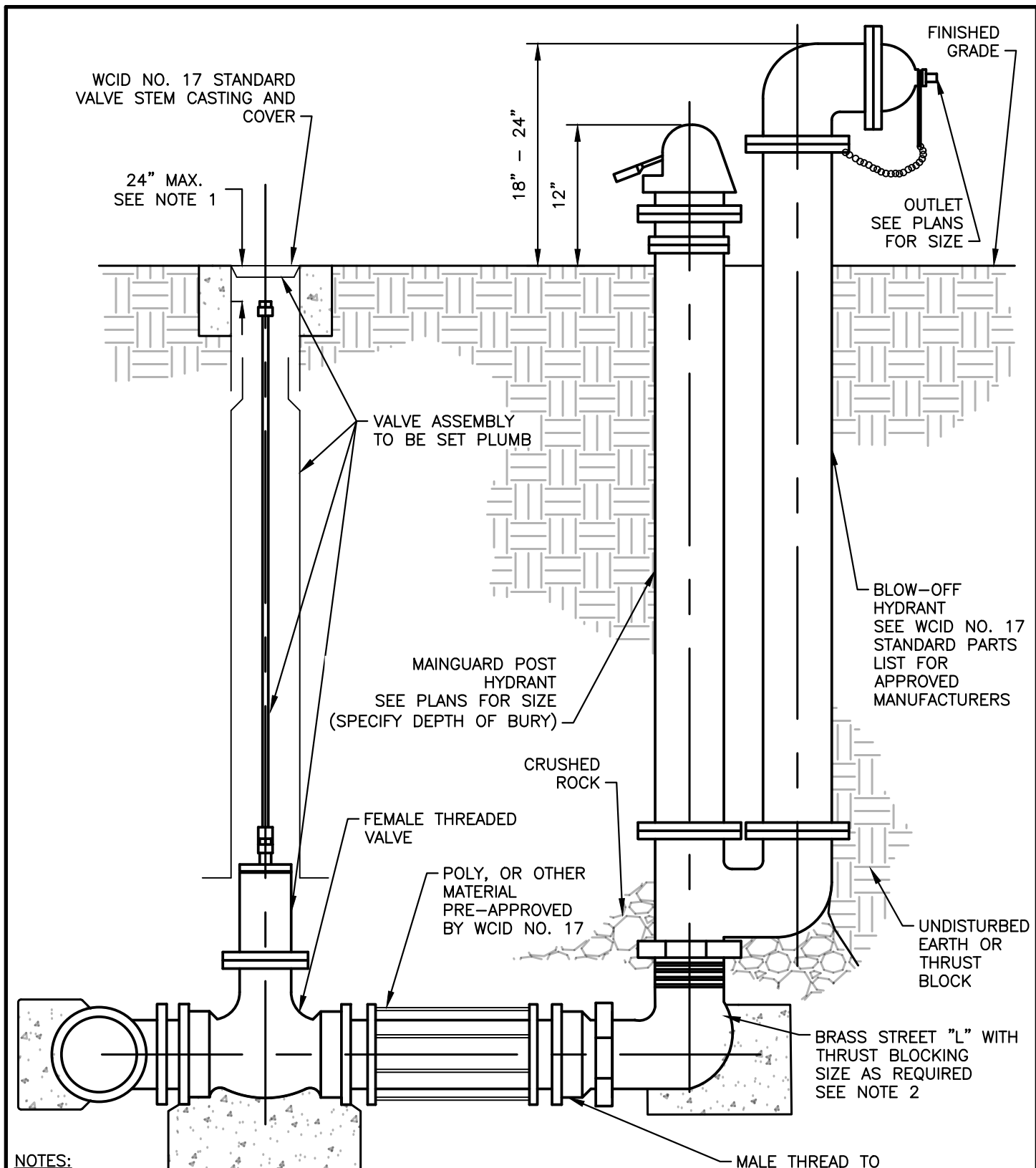
1. FIRE HYDRANTS SHALL BE 4' BURY DEPTH (TYP.). FOR INSTALLATIONS REQUIRING BURY DEPTHS GREATER THAN 4', A 5' BURY DEPTH HYDRANT WITH ONE (1) BARREL EXTENSION NOT EXCEEDING 3' IN LENGTH SHALL BE USED. THE EXTENSION SHALL BE INSTALLED DIRECTLY BELOW THE FIRE HYDRANT. BREAK AWAY BOLTS (SHOE TYPES) SHALL BE PROPERLY SPACED AND PLACED WITH AN EXTENSION AS NEEDED TO ACCOMMODATE THE FIRE HYDRANTS. CONCRETE BLOCKING MUST BE USED WITH CLASS A CONCRETE AND A MINIMUM 1.5-SQFT BEARING AREA. DO NOT BLOCK DRAIN HOLES.
2. FIRE HYDRANTS SHALL BE A MINIMUM DISTANCE OF 3' BEHIND THE CURB OR 6' BEHIND THE EDGE OF PAVEMENT. IN STEINER RANCH, HYDRANTS MAY BE 1 FT. BEHIND CURB. UNDER NO CIRCUMSTANCES SHALL VALVES OR FIRE HYDRANTS BE PLACED IN A CURB OR SIDEWALK. IN AREAS WITHOUT CURBS OR SIDEWALKS, THE FIRE HYDRANT SHALL BE PLACED 3'-6' FROM THE MAIN. ANY OTHER INSTALLATIONS SHOULD BE PERFORMED AT THE DIRECTION AND TO THE SPECIFICATIONS OF THE WCID No. 17 DISTRICT PERSONNEL OR THE DISTRICT ENGINEER.
3. THE GATE VALVES AND FIRE HYDRANT MANUFACTURES MUST MATCH
4. FIRE LINE SHALL HAVE RESTRAINT JOINT FROM MAIN TO HYDRANT.
5. APPROVED BEDDING SHALL BE PLACED AROUND THE BOTTOM OF OF THE HYDRANT FOR A RADIUS OF AT LEAST 12" AND EXTEND AT LEAST 12" ABOVE THE OUTLET. DO NOT BLOCK DRAIN HOLES. GRAVEL SHALL BE 3/8" F BY TEXAS CRUSHED STONE OR EQUAL.
6. WELD SOCKET 2-1/2" X 2" DEEP TO 1" SCH. 40 ROUND STEM EXTENSION. FITTED ON OPERATING NUT. SCH. 80 FOR LENGTHS OVER 10'.
7. VALVE EXTENSIONS ARE REQUIRED ON ALL VALVES THAT EXCEED 3' DEEP FROM FINISHED GRADE. VALVE EXTENSIONS SHALL BE PLACED SUCH THAT THE EXTENSION NUT IS BETWEEN 18" AND 24" FROM FINISHED GRADE.
8. VALVE, DUCTILE IRON PIPE AND STANDARD FIRE HYDRANT SYSTEM SHALL BE RESTRAINT JOINT CONTINUOUSLY TOGETHER.
9. ALL FIRE HYDRANTS MUST BE FROM A WCID NO. 17 APPROVED MANUFACTURER AS PROVIDED ON THE STANDARD PARTS LIST.
10. ALL FIRE HYDRANTS MUST BE FACTORY PAINTED SILVER. PRIVATE FIRE HYDRANTS SHALL BE FIELD PAINTED RED. BOLT AND CAPS SHALL BE PAINTED THE DESIGNATED COLOR PER GALLONS PER MINUTE (GPM) AS FOLLOWS:

CLASS AA	LIGHT BLUE	1500 OR HIGHER GPM
CLASS A	GREEN	1000 - 1499 GPM
CLASS B	ORANGE	500 - 999 GPM
CLASS C	RED	LESS THAN 500 GPM
CLASS D	BLACK OR BAGGED OUT	OF SERVICE

LAKEWAY FIRE HYDRANT: NATIONAL STANDARD THREAD WITH STEAMER CONNECTOR OF 4.5 (FOUR AND ONE-HALF) INCHES. AUSTIN FIRE HYDRANTS: ALL FIRE HYDRANTS SHALL BY DRY BARREL, TRAFFIC MODEL (BREAK-AWAY) POST TYPE HAVING COMPRESSION TYPE MAIN VALVES WITH 5-1/4" OPENING, CLOSING WITH LINE PRESSURE. NFPA1963-NATIONAL (AMERICAN) STANDARD FIRE HOSE COUPLING SCREW THREAD AND CITY OF AUSTIN 4 INCH FIRE HOSE PUMPER CONNECTION STANDARD AND THREAD-SIX (6) THREADS PER INCH "HIG BEE" CUT, 4.859 INCH O.D., 4.6425 INCH ROOT DIAMETER. EXTERIOR SURFACE ABOVE GROUND SHALL RECEIVE A COATING OF THE TYPE AND COLOR SPECIFIED IN THE APPLICABLE VERSION OF THE CITY OF AUSTIN SPECIFICATIONS. THE COATING SHALL BE APPLIED ACCORDING TO COATING MANUFACTURE'S SPECIFICATIONS.

ACCEPTABLE
CITY OF AUSTIN STANDARD DETAIL


	TRAVIS COUNTY WATER CONTROL AND IMPROVEMENT DISTRICT No. 17 STANDARD DETAILS	STANDARD 5 1/4" FIRE HYDRANT ASSEMBLY INSTALLATION (2 OF 2)	
	ADOPTED: 07/01/2025	THE ARCHITECT/ENGINEER ASSUMES RESPONSIBILITY FOR APPROPRIATE USE OF THIS STANDARD.	DETAIL NO. W01

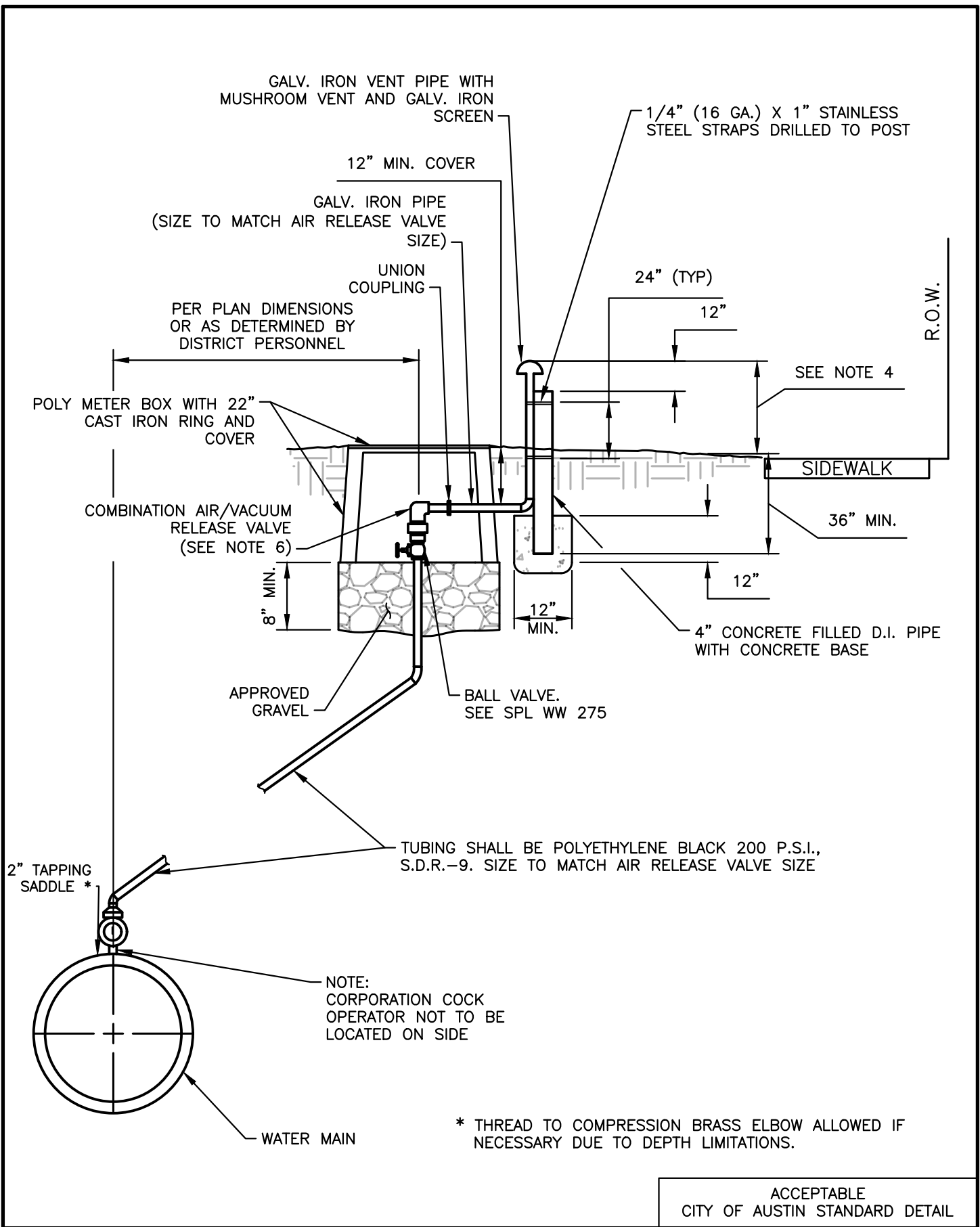


NOTES:


1. VALVE EXTENSIONS ARE REQUIRED ON ALL VALVES THAT EXCEED 36" DEEP FROM FINISHED GRADE. VALVE EXTENSIONS SHALL BE PLACED SUCH THAT THE EXTENSION NUT IS BETWEEN 18 AND 24" FROM FINISHED GRADE.
2. ALL JOINTS SHALL BE RESTRAINED FROM MAIN TO HYDRANT.
3. THE BURY DEPTH MUST BE 4FT. IF THE BURY DEPTH EXCEEDS 4FT, THEN THE PROPER DEPTH BLOW-OFF MUST BE USED.

ACCEPTABLE
CITY OF AUSTIN STANDARD DETAIL

	<p>TRAVIS COUNTY WATER CONTROL AND IMPROVEMENT DISTRICT No. 17 STANDARD DETAILS</p>	<p>BLOW-OFF HYDRANT INSTALLATION DETAIL</p>	
	<p>ADOPTED: 07/01/2025</p>	<p>THE ARCHITECT/ENGINEER ASSUMES RESPONSIBILITY FOR APPROPRIATE USE OF THIS STANDARD.</p>	<p>DETAIL NO. W02</p>




ACCEPTABLE
CITY OF AUSTIN STANDARD DETAIL

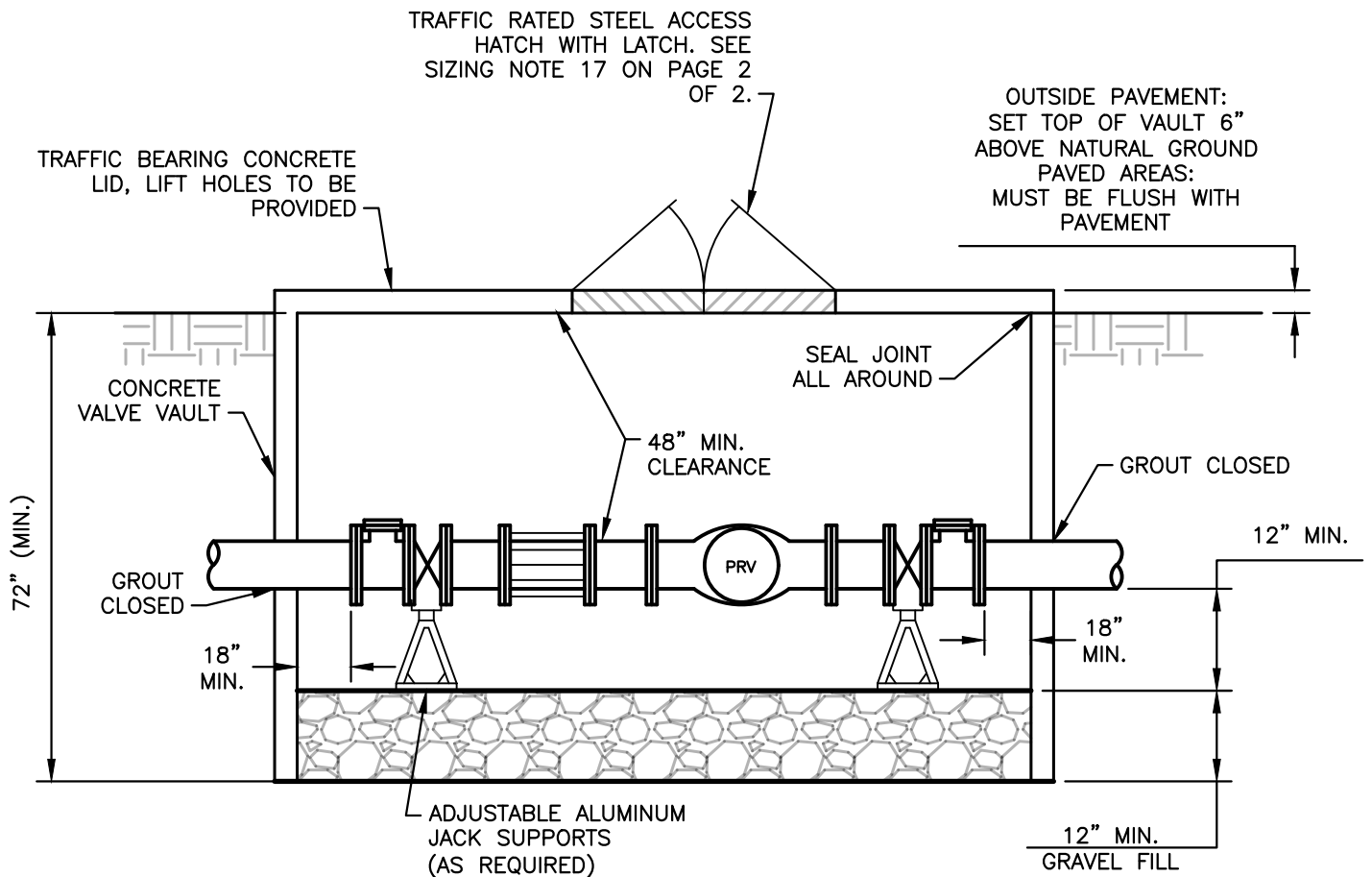
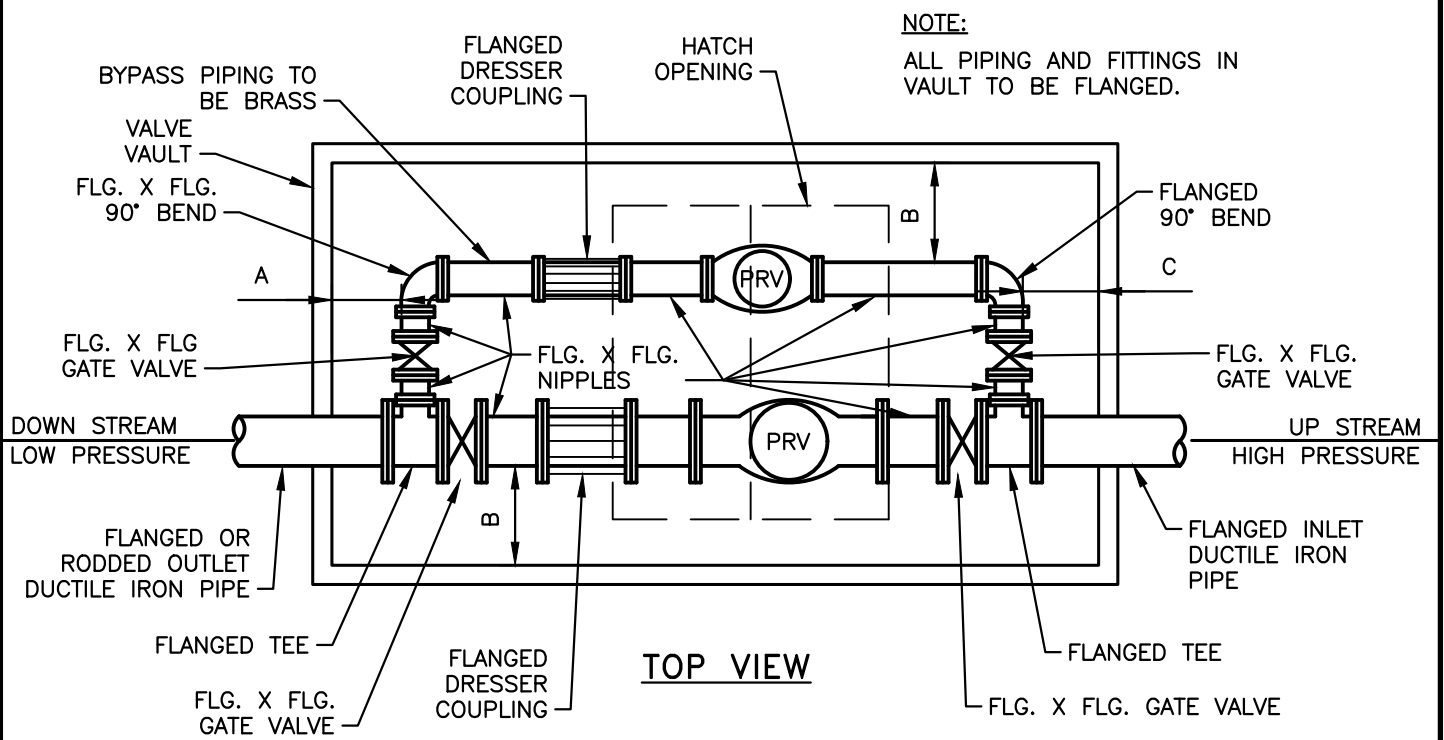
	<p>TRAVIS COUNTY WATER CONTROL AND IMPROVEMENT DISTRICT No. 17 STANDARD DETAILS</p>	<p>VENTED AUTOMATIC COMBINATION AIR/VACUUM RELEASE VALVE INSTALLATION (1 OF 2)</p>	
	<p>ADOPTED: 07/01/2025</p>	<p>THE ARCHITECT/ENGINEER ASSUMES RESPONSIBILITY FOR APPROPRIATE USE OF THIS STANDARD.</p>	<p>DETAIL NO. W03</p>

NOTES:


1. EXTERIOR SURFACES OF EXPOSED AIR VENT PIPE AND D.I. SUPPORT PIPE SHALL BE PAINTED WITH RUST-OLEUM ACRYLIC 5225 (SAFETY BLUE), OR EQUAL, PER COATING MANUFACTURER INSTRUCTIONS PRIOR TO INSTALLATION.
2. AIR VENT PIPE INSTALLATION SHALL BE AS NEAR AS PRACTICAL TO RIGHT-OF-WAY LINE OR EASEMENT LINE AS INDICATED ON PLANS (VERIFY LOCATION WITH WCID NO. 17 DISTRICT PERSONNEL)
3. METER BOX PENETRATION SHALL BE CORE BIT DRILLED. VOID SHALL BE FILLED BY PRESS-SEAL GASKET CORP. PSX RESILIENT CONNECTOR MEETING ASTM C923 OR APPROVED EQUAL.
4. IN UNDEVELOPED AND DEVELOPED AREAS, THE AIR RELEASE SHALL BE 2 FEET IN HEIGHT SUPPORTED BY 4" D.I. PIPE WHICH HAS BEEN PAINTED BLUE AND FILLED WITH CONCRETE AND LOCATED NOT TO BE IN CONFLICT WITH SIDEWALK.
5. AUTOMATIC COMBINATION AIR/VACUUM VALVE SHALL BE INSTALLED IN A MANNER WHICH WILL ALLOW REMOVAL OF ASSEMBLY WITHOUT REMOVAL OF THE METER BOX.
6. ALL ARV'S SHALL BE A MINIMUM SIZE OF 2".
7. ALL ARV'S MUST BE FROM A WCID NO. 17 APPROVED MANUFACTURER AS PROVIDED ON THE STANDARD PARTS LIST.

ACCEPTABLE
CITY OF AUSTIN STANDARD DETAIL

	TRAVIS COUNTY WATER CONTROL AND IMPROVEMENT DISTRICT No. 17 STANDARD DETAILS	VENTED AUTOMATIC COMBINATION AIR/VACUUM RELEASE VALVE INSTALLATION (2 OF 2)	
	ADOPTED: 07/01/2025	THE ARCHITECT/ENGINEER ASSUMES RESPONSIBILITY FOR APPROPRIATE USE OF THIS STANDARD.	DETAIL NO. W03



ACCEPTABLE
CITY OF AUSTIN STANDARD DETAIL


	TRAVIS COUNTY WATER CONTROL AND IMPROVEMENT DISTRICT No. 17 STANDARD DETAILS	DUAL PRV INSTALLATION (1 OF 2)	
	ADOPTED: 07/01/2025	THE ARCHITECT/ENGINEER ASSUMES RESPONSIBILITY FOR APPROPRIATE USE OF THIS STANDARD.	DETAIL NO. W04

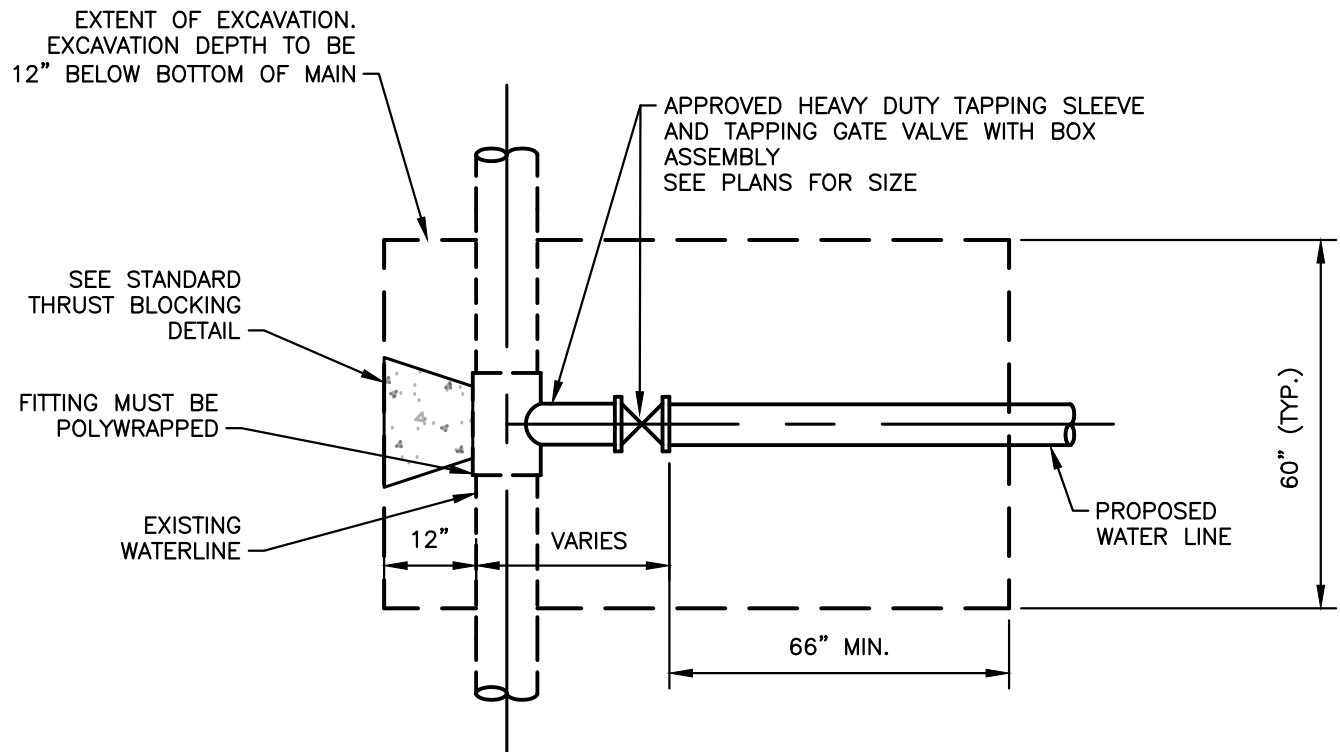
PRV 1	PRV 2	VAULT SIZE
4"	2"	10' X 12'
6"	2"	10' X 12'
8"	2"	10' X 12'
8"	4"	10' X 12'
12"	4"	10' X 15'

NOTES:

1. ALL MATERIALS SHALL BE LEAD FREE IN ACCORDANCE WITH THE SAFE DRINKING WATER ACT.
2. ALL PIPE IN PRESSURE REDUCING VALVE/BY-PASS INSTALLATION TO BE THREADED BRASS OR FLANGED DUCTILE IRON.
3. PRESSURE REDUCING VALVE SHALL BE IN ACCORDANCE WITH STANDARD PRODUCTS LIST NO. WW-319.
4. FOR DETAILS ON VAULT, LID AND MANHOLE ACCESS HATCH. (CONTACT WCID NO. 17 STAFF DISTRICT PERSONNEL.)
5. PRESSURE ON THE LOW SIDE OF PRV SHALL BE AS NOTED ON THE PLANS BY THE DESIGN ENGINEER.
6. IF VAULT IS TO BE INSTALLED IN PAVEMENT, LID SHALL BE FLUSH WITH PAVEMENT AND TRAFFIC BEARING. IF VAULT IS TO BE INSTALLED OUTSIDE PAVEMENT LID SHALL BE INSTALLED 12" ABOVE FINISHED GRADE.
7. ALL NON-FLANGED FITTINGS SHALL BE MJ RESTRAINT
8. PRV ASSEMBLY, INCLUDING THE VAULT, SHALL NOT BE PLACED WITHIN THE CURB.
9. IF VAULT IS TO BE TRAFFIC BEARING, REFER TO CITY OF AUSTIN SPECIFICATIONS.
10. VERTICAL GATE VALVES TO BE WHEEL OPERATED.
11. ALL SLEEVES TO BE ON DOWN STREAM SIDE FOR SAFETY PURPOSES.
12. ALL FITTINGS SHALL BE FLANGED IN VAULT.
13. ALL NON-FLANGED PIPE TO BE INSTALLED WITH MEGA-LUG RETAINER GLANDS OR APPROVED EQUIVALENT RESTRAINER.
14. ALL VALVES SHALL HAVE JACK STAND SUPPORTS.
15. ALL POINTS "A" THROUGH "C" TO HAVE A MINIMUM CLEARANCE OF EIGHTEEN (18) INCHES.
16. INLET PIPE SHALL BE RODDED BACK TO GATE VALVE OR PIPE JOINT.
17. HATCH OPENING SHALL BE ADEQUATELY SIZED TO SPAN BOTH PRV'S.

ACCEPTABLE
CITY OF AUSTIN STANDARD DETAIL


	TRAVIS COUNTY WATER CONTROL AND IMPROVEMENT DISTRICT No. 17 STANDARD DETAILS	DUAL PRV INSTALLATION (2 OF 2)	
	ADOPTED: 07/01/2025	THE ARCHITECT/ENGINEER ASSUMES RESPONSIBILITY FOR APPROPRIATE USE OF THIS STANDARD.	DETAIL NO. W04

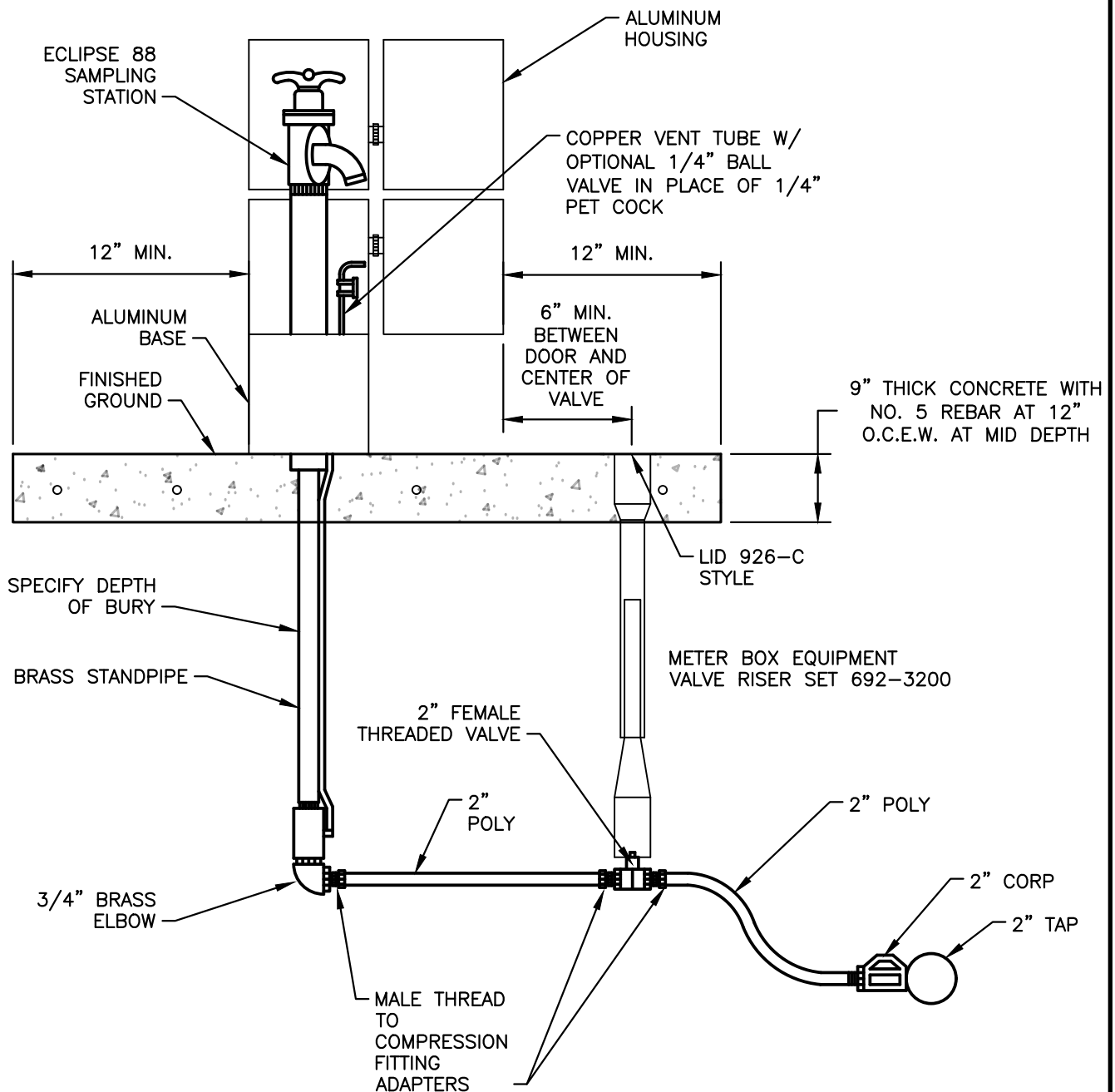


NOTES:

1. ONLY HEAVY DUTY, MJ TAPPING SLEEVE AND TAPPING GATE VALVE SHALL BE USED. TAPPING SLEEVE SHALL BE MUELLER H-615, AMERICAN FLOW SERIES 2800 OR APPROVED EQUAL.
2. TAPPING SLEEVE AND VALVE SHALL BE TESTED PRIOR TO THRUST BLOCK INSTALLATION.
3. TAPPING SLEEVE AND VALVE SHALL BE AIR TESTED AT 100 PSI FOR 10 MINUTES.
4. HEAVY DUTY TAPPING TEE MUST BE FROM A WCID NO. 17 APPROVED MANUFACTURER AS PROVIDED ON THE STANDARD PARTS LIST.

ACCEPTABLE
CITY OF AUSTIN STANDARD DETAIL


	TRAVIS COUNTY WATER CONTROL AND IMPROVEMENT DISTRICT No. 17 STANDARD DETAILS	PRESSURE TAP INSTALLATION	
	ADOPTED: 07/01/2025	THE ARCHITECT/ENGINEER ASSUMES RESPONSIBILITY FOR APPROPRIATE USE OF THIS STANDARD.	DETAIL NO. W05

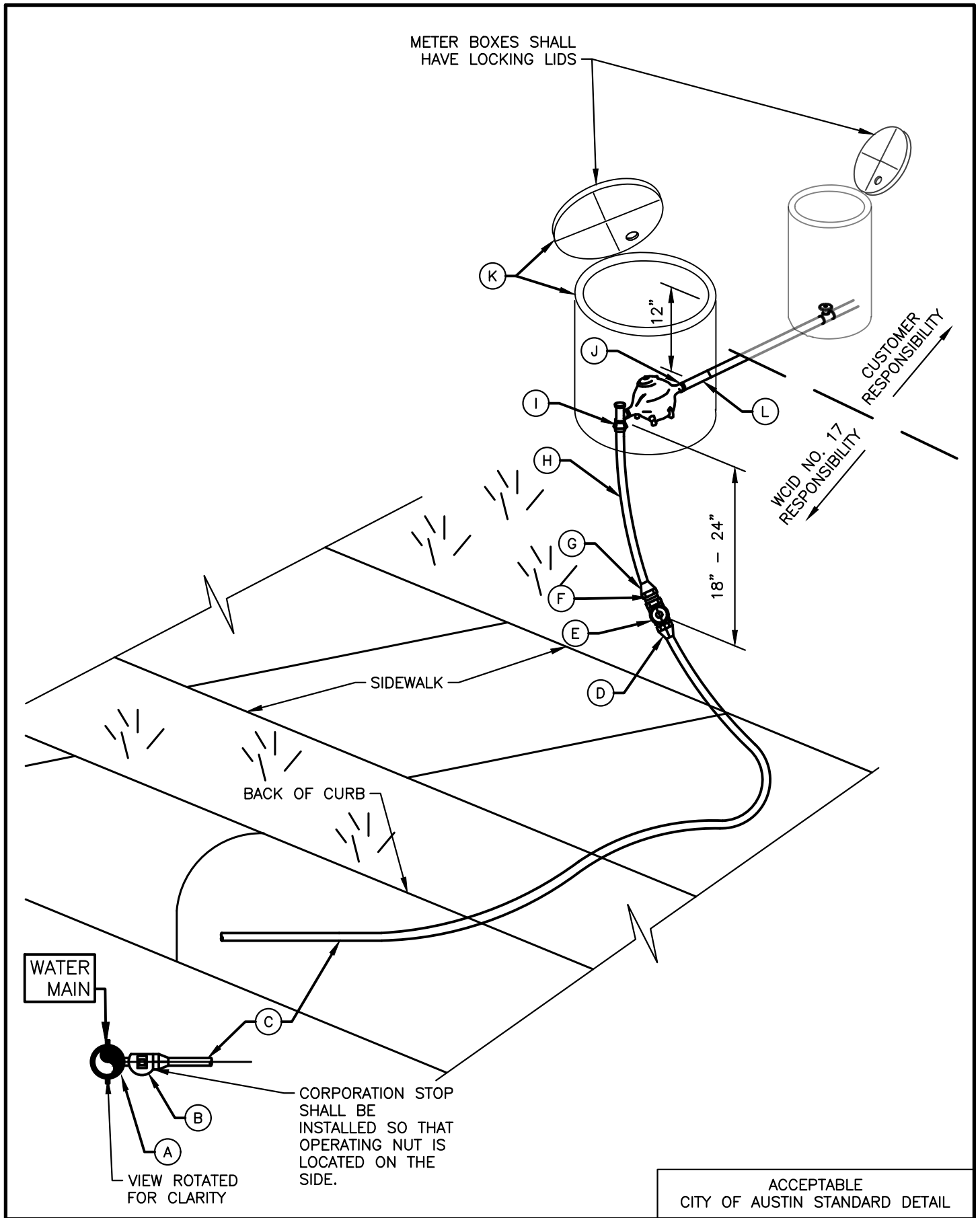


NOTE:

1. ALL NEW SINGLE-FAMILY SITE DEVELOPMENT PROJECTS MUST INCLUDE AT LEAST ONE WATER SAMPLING STATION FOR EVERY 50 LOTS. IN SOME CASES, WCID NO. 17 MAY DETERMINE THAT ADDITIONAL WATER SAMPLING STATIONS ARE NECESSARY. ALL NEW MULTI-FAMILY PROJECTS MUST INCLUDE ONE WATER SAMPLING STATION PER BUILDING, UNLESS OTHERWISE APPROVED BY WCID NO. 17. NEW COMMERCIAL DEVELOPMENTS ARE REQUIRED TO INCLUDE WATER SAMPLING STATIONS WHEN DEEMED APPROPRIATE BY WCID NO. 17. THESE WATER SAMPLING STATIONS SHOULD BE INSTALLED IN DESIGNATED AREAS AWAY FROM ANY TRAFFIC. THEIR LOCATIONS SHOULD BE CAREFULLY SELECTED TO ENSURE PROTECTION FROM POTENTIAL DAMAGE.

ACCEPTABLE
CITY OF AUSTIN STANDARD DETAIL

	TRAVIS COUNTY WATER CONTROL AND IMPROVEMENT DISTRICT No. 17 STANDARD DETAILS	WATER SAMPLING STATION DETAIL	
	ADOPTED: 07/01/2025	THE ARCHITECT/ENGINEER ASSUMES RESPONSIBILITY FOR APPROPRIATE USE OF THIS STANDARD.	DETAIL NO. W06



	TRAVIS COUNTY WATER CONTROL AND IMPROVEMENT DISTRICT No. 17 STANDARD DETAILS	5/8", 3/4" OR 1" SINGLE METER INSTALLATION (1 OF 2)	
	ADOPTED: 07/01/2025	THE ARCHITECT/ENGINEER ASSUMES RESPONSIBILITY FOR APPROPRIATE USE OF THIS STANDARD.	DETAIL NO. W07


MATERIALS LIST

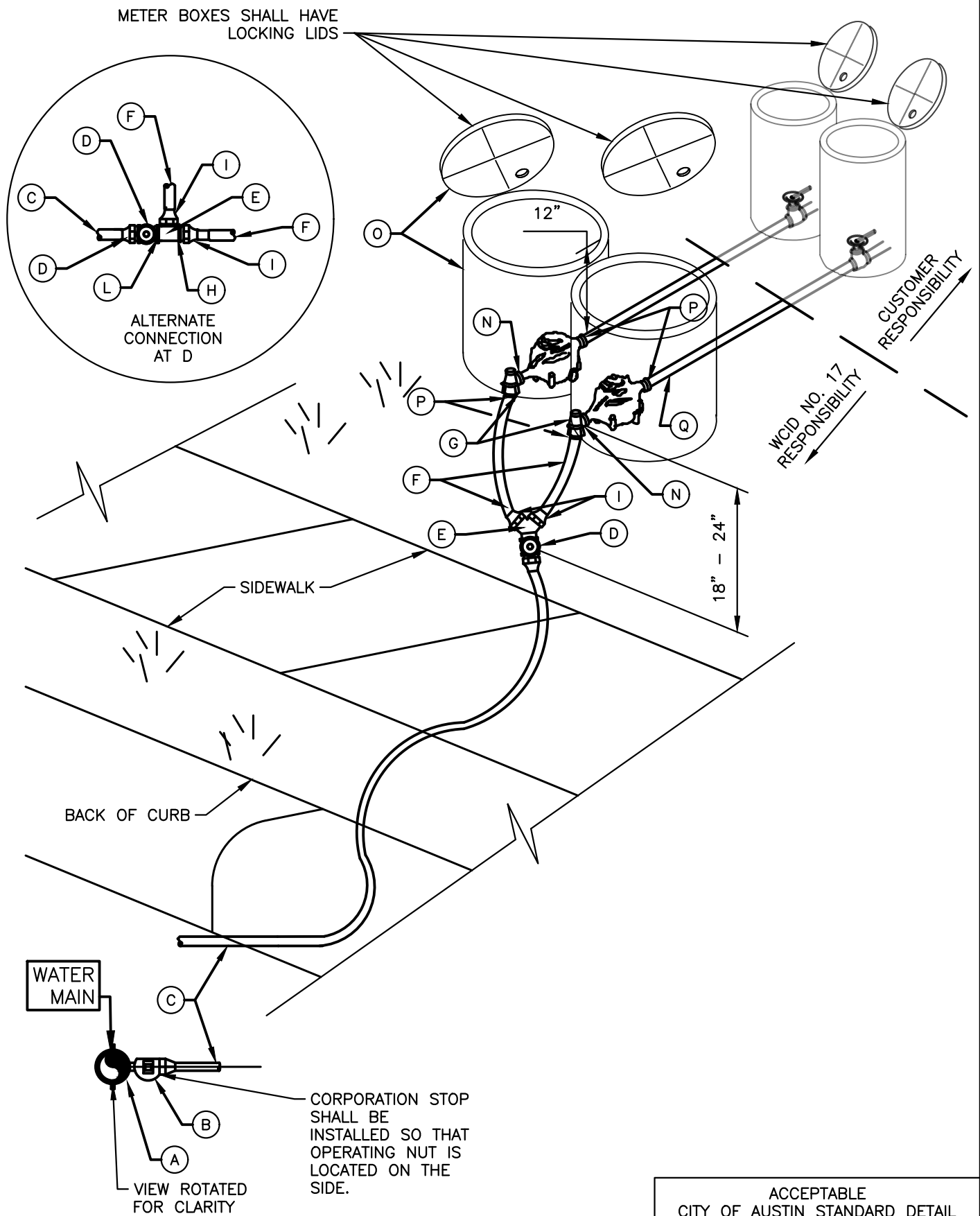
- (A) TAP SADDLE FOR CONNECTION – ON ALL PIPES (317–D5)
- (B) 1–1/2" CORPORATION STOP – (FB 1100–6G)
- (C) 1–1/2" SERVICE PIPE (POLY E SDR 9) 200 P.S.I.
- (D) 54 INSERT STIFFNER
- (E) 1–1/2" BRASS BALL VALVE CURB STOP TYPE B41–666W.G.
- (F) 1–1/2" X 1" REDUCER BUSHING
- (G) 1" MIP X COMP (C84–44G)
- (H) 1" POLY SDR 9, 52 INSERT (200 P.S.I.)
- (I) 1" METER ANGLE STOP (KV43–444WG)
- (J) WATER NIPPLE WITH 3/4" MALE THREADS
- (K) 1–SINGLE METER BOX – 34 P14 WESTERN IRON WORKS WITH COMPOSITE LID AND RING SPECIFY SIZE OF HOLE FOR TOUCH READ PAD 2" – 2–1/8"
- (L) BRASS PIPE, 4' MINIMUM LENGTH FROM METER TO CUSTOMER YARD LINE


**NO COPPER PIPE ALLOWED. ONLY BRASS AND/OR POLYETHYLENE SHALL BE USED.
ALL MATERIAL SHALL BE LEAD FREE IN ACCORDANCE WITH THE SAFE DRINKING WATER ACT**

NOTES:

1. TOP OF BOXES SHALL BE 2" ABOVE CURB AND/OR FINISHED GRADE OR FLUSH WITH PAVEMENT SURFACE.
2. WATER SERVICE LINES SHALL BE BEDDED IN APPROVED GRAVEL BEDDING TO PROVIDE SIX INCHES (6") OF CUSHION BELOW THE LINE, AND 12" ABOVE. WATER METERS SHALL BE INSTALLED IN GROUND WHICH HAS AN ELEVATION NO HIGHER THAN 4 FEET FROM FINISHED GRADE STREET LEVEL. METERS LOCATED ON HIGH GROUND OR UPON STEEP SLOPES ARE NOT PERMITTED. TRENCH BOTTOM AND WALLS SHALL BE CLEARED OF ALL PROTRUDING ROCKS WHICH COULD DAMAGE THE PIPE BEFORE THE BEDDING IS PLACED. BEDDING SHALL BE FILLED TO THE SAME ELEVATION AS THE TOP OF THE ADJACENT CURB AND/OR EDGE OF PAVEMENT AND SHALL BE COMPACTED TO A PROCTOR DENSITY OF 90%. NO ROCKS OR OTHER MATERIAL OVER THREE INCHES (3") IN DIAMETER SHALL BE USED FOR BACK FILL OVER THE SAND.
3. METER BOX MUST BE BEHIND CURB/ PAVEMENT AND/OR SIDEWALK AND OUT OF VEHICULAR TRAFFIC AREA.
4. THE BOTTOM OF THE WATER SERVICE AT ALL POINTS SHALL BE AT LEAST TWELVE (12") INCHES ABOVE THE TOP OF THE WASTEWATER SERVICE LINE.
5. WATER SERVICE LINE SHALL BE INSTALLED WITH WATER TIGHT JOINTS TESTED TO LINE PRESSURE.
6. ISOLATION VALVES WILL NOT BE SET UNDER OR NEAR SIDE WALKS OR CURBS, WHERE THEY CANNOT BE LOCATED.
7. PRESSURE REDUCING VALVE AND A BACK FLOW PREVENTER (WITH THERMAL EXPANSION TANK IN HOUSE IF REQUIRED) IN THAT ORDER ON THE YARD LINE.

		ACCEPTABLE CITY OF AUSTIN STANDARD DETAIL	
	TRAVIS COUNTY WATER CONTROL AND IMPROVEMENT DISTRICT No. 17 STANDARD DETAILS	5/8", 3/4" OR 1" SINGLE METER INSTALLATION (2 OF 2)	
	ADOPTED: 07/01/2025	THE ARCHITECT/ENGINEER ASSUMES RESPONSIBILITY FOR APPROPRIATE USE OF THIS STANDARD.	DETAIL NO. W07



	TRAVIS COUNTY WATER CONTROL AND IMPROVEMENT DISTRICT No. 17 STANDARD DETAILS	(TWO) 1" METER INSTALLATION (1 OF 2)	
	ADOPTED: 07/01/2025	THE ARCHITECT/ENGINEER ASSUMES RESPONSIBILITY FOR APPROPRIATE USE OF THIS STANDARD.	DETAIL NO. W08

MATERIALS LIST


- (A) TAP SADDLE FOR CONNECTION – ON ALL PIPES (317–D5)
- (B) 1–1/2" CORPORATION STOP (FB–1100–6G) (1–1/2" MIP X 1–1/2" COMP)
- (C) 1–1/2" SERVICE PIPE (POLY E SDR 9) 200 P.S.I. (54 INSERT)
- (D) 1–1/2" BRASS BALL VALVE CURB STOP TYPE (B41–666WG). 1–1/2 COMP X 1–1/2" F.I.P. CLOSE NIPPLE, BRONZE I.P. THREAD. (ALT.)
- (E) 1–1/2" Y-BRANCH (Y48–246G) 2 – 1" COMP. X 1" X 1–1/2" MIP – (ALTERNATE BRONZE TEE)
- (F) 1" SERVICE PIPE (POLY E SDR 9) 200 P.S.I. (ALTERNATE J)
- (G) (2) 1" METER ANGLE STOP (KV43–444 WG); 54 INSERT 1" COMPRESSION X METER SWIVEL NUT 1"
- (H) BRONZE BUSHING, 1–1/2" X 1", I.P. THREADS (ALT.)
- (I) 1–1/2" MIP X 1–1/2" COMPRESSION (ALT.)
- (L) 1–1/2" COMPRESSION X 1–1/2" FIP. (ALT.)
- (N) 1" COMPRESSION X METER SWIVEL NUT 1"
- (O) (2) SINGLE METER BOXES – 34P14 WESTERN IRON WORKS WITH COMPOSITE LID AND RING. SPECIFY SIZE OF HOLE FOR TOUCH READ PAD 2" – 2–1/8"
- (P) WATER NIPPLE WITH 3/4" THREADS
- (Q) 3/4" WATER SERVICE LINE (POLY E SDR 9). (54 INSERT)

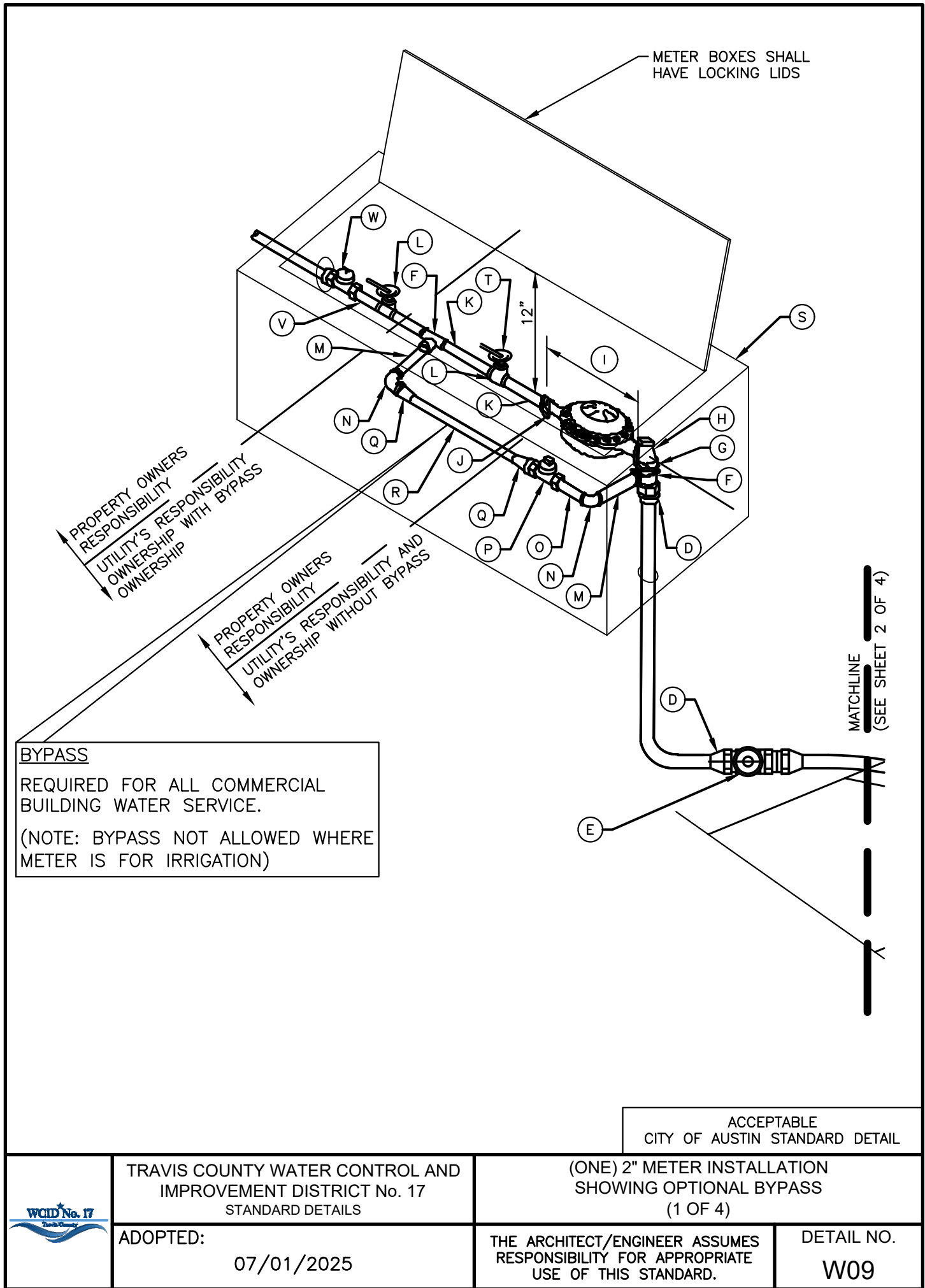
**NO COPPER PIPE ALLOWED. ONLY BRASS AND/OR POLYETHYLENE SHALL BE USED.
ALL MATERIAL SHALL BE LEAD FREE IN ACCORDANCE WITH THE SAFE DRINKING WATER ACT.**

NOTES:

1. BRANCH CONNECTION AND BOTH METER ANGLE STOPS MUST BE INSTALLED PRIOR TO FIRST METER INSTALLATION EVEN THOUGH SECOND PROPERTY MAY NOT BE READY FOR SERVICE.
2. TOP OF BOXES SHALL BE 2" ABOVE CURB AND/OR FINISHED GRADE OR FLUSH WITH PAVEMENT SURFACE.
3. WATER SERVICE LINES SHALL BE BEDDED IN APPROVED GRAVEL BEDDING TO PROVIDE SIX (6") INCHES OF CUSHION BELOW THE LINE, AND 12" ABOVE. WATER METERS SHALL BE INSTALLED IN GROUND WHICH HAS AN ELEVATION NO HIGHER THAN 4 FEET FROM FINISHED GRADE STREET LEVEL. METERS LOCATED ON HIGH GROUND OR UPON STEEP SLOPES ARE NOT PERMITTED. TRENCH BOTTOM AND WALLS SHALL BE CLEARED OF ALL PROTRUDING ROCKS WHICH COULD DAMAGE THE PIPE BEFORE THE BEDDING IS PLACED. BEDDING SHALL BE FILLED TO THE SAME ELEVATION AS THE TOP OF THE ADJACENT CURB AND/OR EDGE OF PAVEMENT AND SHALL BE COMPACTED TO A PROCTOR DENSITY OF 90%. NO ROCKS OR OTHER MATERIAL OVER THREE INCHES (3") IN DIAMETER SHALL BE USED FOR BACK FILL OVER THE SAND.
4. METER BOX MUST BE BEHIND CURB, PAVEMENT AND/OR SIDEWALK AND OUT OF VEHICULAR TRAFFIC AREA.
5. THE BOTTOM OF THE WATER SERVICE AT ALL POINTS SHALL BE AT LEAST TWELVE (12") INCHES ABOVE THE TOP OF THE WASTEWATER SERVICE LINES.
6. WATER SERVICE LINES SHALL BE INSTALLED WITH WATER TIGHT JOINTS TESTED TO LINE PRESSURE.
7. ISOLATION VALVES WILL NOT BE SET UNDER OR NEAR SIDEWALKS OR CURB WHERE THEY CANNOT BE LOCATED.
8. PRESSURE REDUCING VALVE AND A BACK FLOW PREVENTER (WITH THERMAL EXPANSION TANK IN HOUSE IF REQUIRED) IN THAT ORDER ON THE YARD LINE.


ACCEPTABLE
CITY OF AUSTIN STANDARD DETAIL

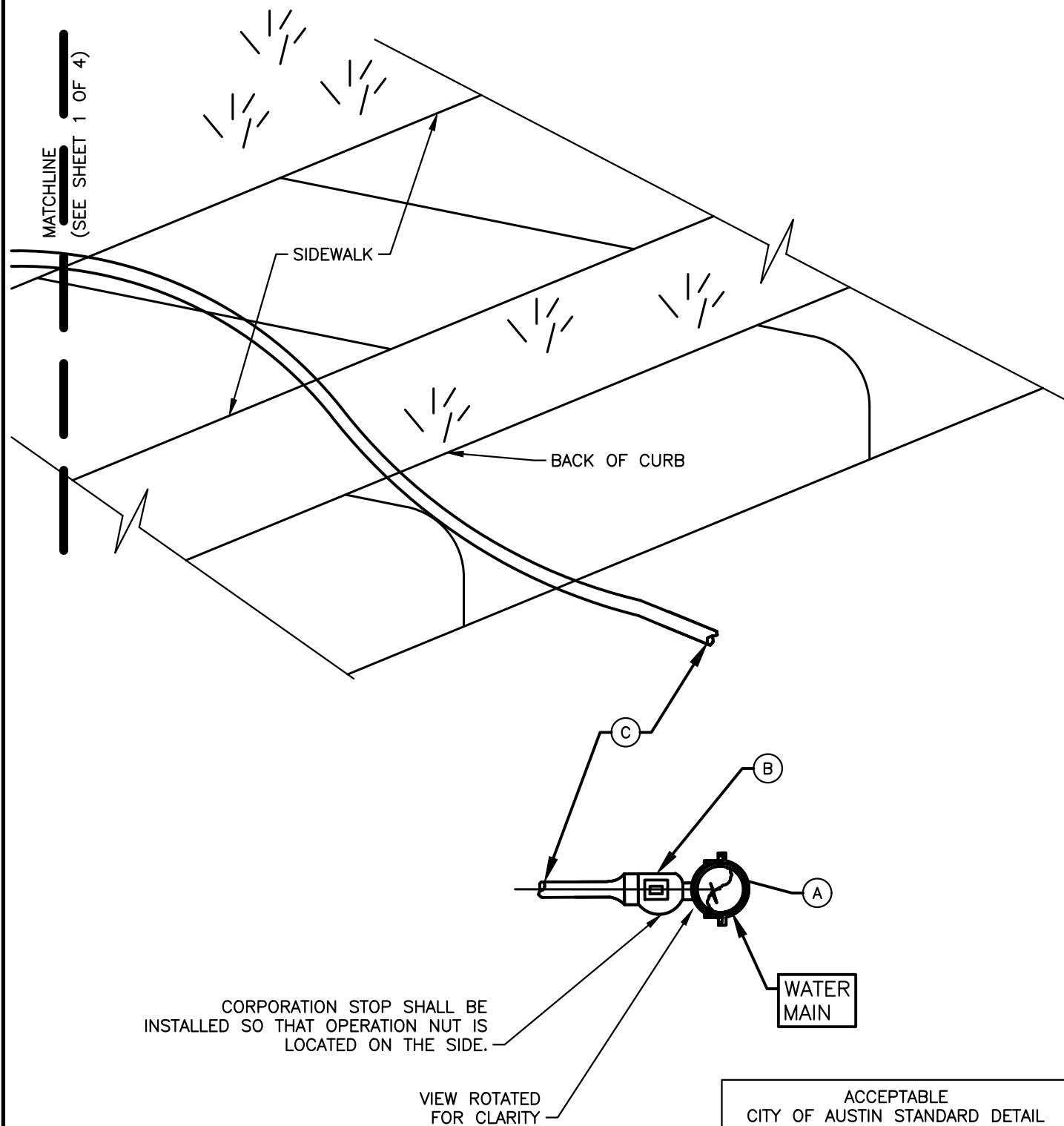
	TRAVIS COUNTY WATER CONTROL AND IMPROVEMENT DISTRICT No. 17 STANDARD DETAILS	(TWO) 1" METER INSTALLATION (2 OF 2)	
	ADOPTED: 07/01/2025	THE ARCHITECT/ENGINEER ASSUMES RESPONSIBILITY FOR APPROPRIATE USE OF THIS STANDARD.	DETAIL NO. W08




BYPASS
 REQUIRED FOR ALL COMMERCIAL
 BUILDING WATER SERVICE.
 (NOTE: BYPASS NOT ALLOWED WHERE
 METER IS FOR IRRIGATION)

ACCEPTABLE
 CITY OF AUSTIN STANDARD DETAIL

	TRAVIS COUNTY WATER CONTROL AND IMPROVEMENT DISTRICT No. 17 STANDARD DETAILS	(ONE) 2" METER INSTALLATION SHOWING OPTIONAL BYPASS (1 OF 4)	
	ADOPTED: 07/01/2025	THE ARCHITECT/ENGINEER ASSUMES RESPONSIBILITY FOR APPROPRIATE USE OF THIS STANDARD.	DETAIL NO. W09



	<p>TRAVIS COUNTY WATER CONTROL AND IMPROVEMENT DISTRICT No. 17 STANDARD DETAILS</p>	<p>(ONE) 2" METER INSTALLATION SHOWING OPTIONAL BYPASS (2 OF 4)</p>	
	<p>ADOPTED: 07/01/2025</p>	<p>THE ARCHITECT/ENGINEER ASSUMES RESPONSIBILITY FOR APPROPRIATE USE OF THIS STANDARD.</p>	<p>DETAIL NO. W09</p>


MATERIALS LIST

(A)	TAP SADDLE FOR CONNECTION – ON ALL PIPES (317–D5)	2"
(B)	CORPORATION STOP – SERVICE PIPE OUTLET	2"
(C)	SERVICE PIPE, POLY E SDR 9, INSERTS REQUIRED (200 PSI)	2"
(D)	COUPLING: SERVICE PIPE TO MAIL I.P.T. (COMPRESSION FITTING)	2"
(E)	BALL VALVE, SEE SPL WW 275	2"
(F)	TEES, BRASS.	2" X 2" X 1"
(G)	CLOSE–NIPPLE, BRASS	2"
(H)	ANGLE METER STOP, FEMALE I.P. THREAD INLET X FLANGE OUTLET	2"
(I)	WATER METER LENGTH WITH GASKETS	17"
(J)	FLANGE, BRASS, FEMALE I.P. THREAD (THE FLANGE MUST HAVE OVAL HOLES TO FIT 2–INCH WATER METERS)	2"
(K)	NIPPLES, BRASS	1" X 5"
(L)	CUSTOMER’S BALL VALVE, SEE SPL WW 275	2"
(M)	NIPPLES, BRASS	1" X 5"
(N)	90 DEGREE ELBOWS, BRASS	1"
(O)	NIPPLES, BRASS	1" X 3"
(P)	CURB STOP, BRASS, FEMALE I.P. THREAD BOTH ENDS WITH LOCK NUTS	1"
(Q)	COUPLINGS, BRASS, SERVICE PIPE TO MALE THREAD	1"
(R)	SERVICE PIPE (BRASS OR SDR 9 200 P.S.I. POLY)	1"
(S)	RECTANGULAR COMPOSITE BOX AND COMPOSITE LID. SPECIFY SIZE OF HOLE FOR TOUCH READ PAD 2" X 2–1/8"	
(T)	BRONZE GATE VALVE: NON RISING STEM 1.5" OR 2"	
(V)	BRASS PIPE, (4' MINIMUM LENGTH) FROM METER TO CUSTOMER YARD LINE	
(W)	PRESSURE REDUCING VALVE (PVR)	2"

NO COPPER PIPE ALLOWED. ONLY BRASS AND/OR POLYETHYLENE SHALL BE USED.

ALL MATERIALS SHALL BE LEAD FREE IN ACCORDANCE THE SAFE DRINKING WATER ACT.


ACCEPTABLE
CITY OF AUSTIN STANDARD DETAIL

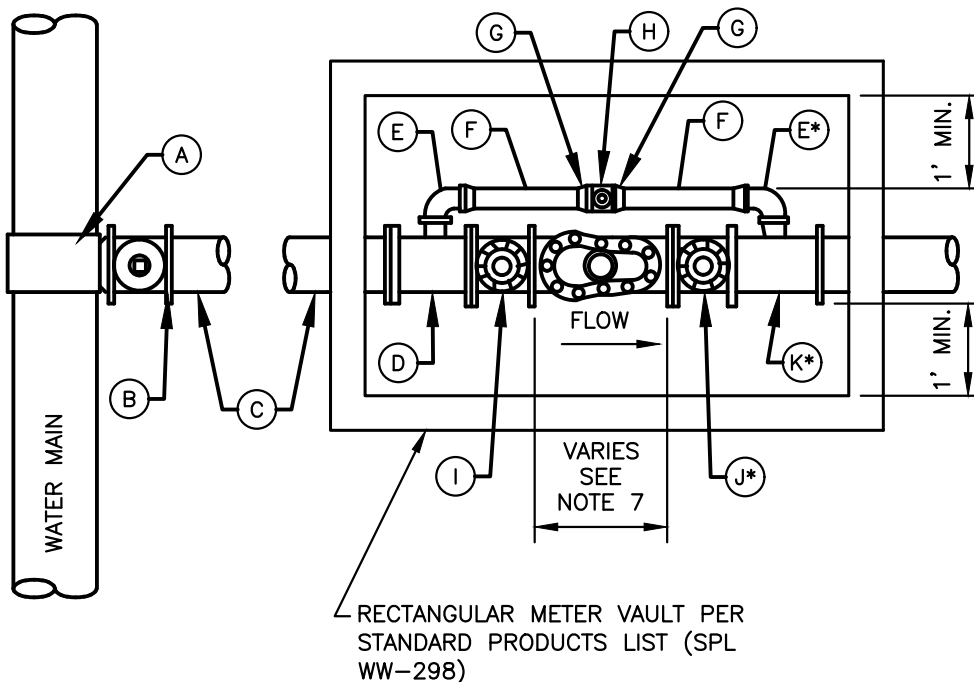
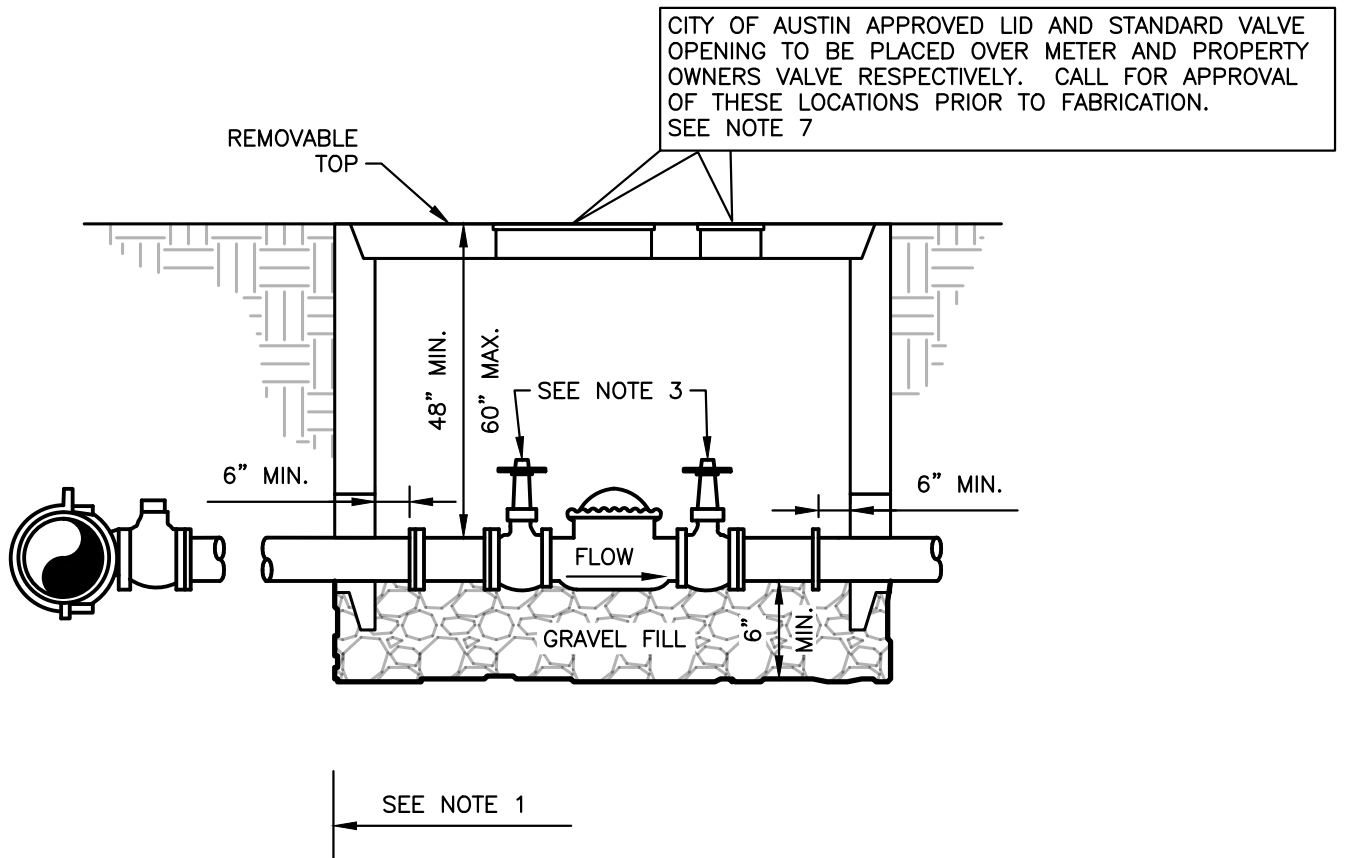
	TRAVIS COUNTY WATER CONTROL AND IMPROVEMENT DISTRICT No. 17 STANDARD DETAILS	(ONE) 2" METER INSTALLATION SHOWING OPTIONAL BYPASS (3 OF 4)	
	ADOPTED: 07/01/2025	THE ARCHITECT/ENGINEER ASSUMES RESPONSIBILITY FOR APPROPRIATE USE OF THIS STANDARD.	DETAIL NO. W09

NOTES:


1. TOP OF BOXES SHALL BE 2" ABOVE THE CURB AND OR FINISHED GRADE OR FLUSH WITH PAVEMENT SURFACE.
2. IF TWO METERS ARE INSTALLED WITH A SINGLE SERVICE LINE, THEY SHALL BE INSTALLED IN SEPARATE BOXES WITH PIPING AS SHOWN FROM A TEE. THE COMMON SERVICE LINE TO THE TEE SHALL BE 2" FOR TWO 1-1/2" METERS, OR 4" DUCTILE IRON PIPE FOR TWO 2" METERS.
3. WATER SERVICE LINES SHALL BE BEDDED IN APPROVED GRAVEL BEDDING TO PROVIDE SIX (6") INCHES OF CUSHION BELOW THE LINE, AND 12" ABOVE. WATER METERS SHALL BE INSTALLED IN GROUND WHICH HAS AN ELEVATION NO HIGHER THEN 4 FEET FROM FINISHED GRADE STREET LEVEL. METERS LOCATED ON HIGH GROUND OR UPON STEEP SLOPES ARE NOT PERMITTED. TRENCH BOTTOM AND WALLS SHALL BE CLEARED OF ALL PROTRUDING ROCKS WHICH COULD DAMAGE THE PIPE BEFORE THE BEDDING IS PLACED. BEDDING SHALL BE FILLED TO THE SAME ELEVATION AS THE ADJACENT CURB AND/OR EDGE OF PAVEMENT AND SHALL BE COMPACTED TO A PROCTOR DENSITY OF 90%. NO ROCKS OR OTHER MATERIAL OVER THREE INCHES (3") IN DIAMETER SHALL BE USED FOR BACK FILL OVER THE SAND.
4. METER BOX MUST BE BEHIND CURB AND/OR SIDEWALK AND OUT OF VEHICULAR TRAFFIC AREA.
5. THE BOTTOM OF THE WATER SERVICE AT ALL POINTS SHALL BE AT LEAST TWELVE (12") INCHES ABOVE THE TOP OF THE WASTEWATER SERVICE LINES.
6. WATER SERVICE LINES SHALL BE INSTALLED WITH WATER TIGHT JOINTS TESTED TO 200 P.S.I. 10 MIN. 150 P.S.I. FOR 1 HOUR.
7. ISOLATION VALVES WILL NOT BE SET UNDER OR NEAR SIDEWALK OR CURB WHERE THEY CANNOT BE LOCATED.
8. PRESSURE REDUCING VALVE AND A BACK FLOW PREVENTER (WITH THERMAL EXPANSION TANK IN HOUSE) IF REQUIRED IN THAT ORDER ON THE YARD LINE.

ACCEPTABLE
CITY OF AUSTIN STANDARD DETAIL

	TRAVIS COUNTY WATER CONTROL AND IMPROVEMENT DISTRICT No. 17 STANDARD DETAILS	(ONE) 2" METER INSTALLATION SHOWING OPTIONAL BYPASS (4 OF 4)	
	ADOPTED: 07/01/2025	THE ARCHITECT/ENGINEER ASSUMES RESPONSIBILITY FOR APPROPRIATE USE OF THIS STANDARD.	DETAIL NO. W09



ACCEPTABLE
CITY OF AUSTIN STANDARD DETAIL

	<p>TRAVIS COUNTY WATER CONTROL AND IMPROVEMENT DISTRICT No. 17 STANDARD DETAILS</p>	<p>STANDARD INSTALLATION DETAIL FOR 3", 4" & 6" COMPOUND METERS (1 OF 2)</p>	
	<p>ADOPTED: 07/01/2025</p>	<p>THE ARCHITECT/ENGINEER ASSUMES RESPONSIBILITY FOR APPROPRIATE USE OF THIS STANDARD.</p>	<p>DETAIL NO. W10</p>

MATERIALS LIST

- (A) APPROVED HEAVY-DUTY TAPPING SLEEVE, SEE STANDARD PARTS LIST
- (B) TAPPING VALVE (GATE, IRON BODY WITH M.J. OUTLET)
- (C) D.I. PIPE NOT LESS THEN 4" DIAMETER
- (D) TAPPING D.I. TEE – M.J. X SPIGOT
- * (E) BRASS TO MALE IRON PIPE QUARTER BEND COUPLINGS
- (F) 2" BRASS PIPE
- (G) BRASS TO MALE IRON PIPE FITTINGS
- (H) 2" BRASS LOCKABLE GATE VALVE
- (I) SHUT OFF VALVE, GATE, C.I.: MIN. 4", FLANGE X M.J.
- * (J) CUSTOMER'S VALVE, GATE, C.I., FLANGED
- * (K) TAPPED D.I. TEE
- * VALVE AND FITTINGS TO BE FURNISHED AND INSTALLED BY CUSTOMER.

(ITEMS D & K MAY BE LOCATED OUTSIDE OF BOX)


NO COPPER PIPE ALLOWED

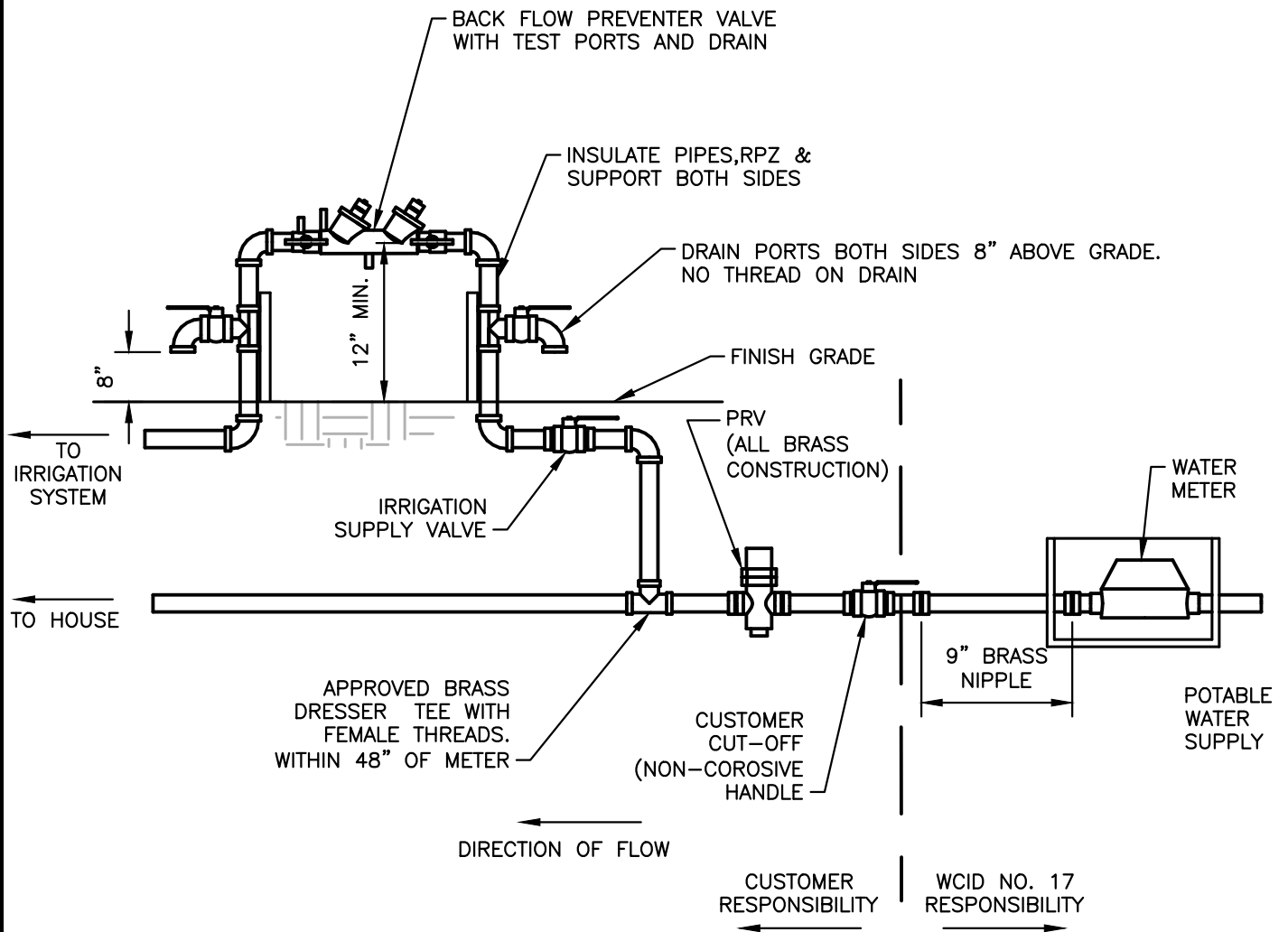
ALL MATERIAL SHALL BE LEAD FREE IN ACCORDANCE WITH THE SAFE DRINKING WATER ACT.

NOTES:

1. BOX MUST BE BEHIND CURB AND/OR WALK AND OUT OF VEHICULAR TRAFFIC.
2. PIPE AND FITTINGS TO BE DUCTILE IRON EXCEPT AS NOTED. NO PLASTIC PIPE. NO SOLDERED JOINTS.
3. NO RISING STEM OR WHEEL OPERATED VALVES EXCEPT ON 2" BY-PASS VALVE.
4. ROD RESTRAINT IS REQUIRED AT ALL MECHANICAL OR PUSH-ON TYPE JOINTS.
5. TOP OF BOX MUST BE 1" ABOVE GROUND OR FLUSH WITH PAVEMENT SURFACE.
6. FOR METER LENGTH, APPROVED TYPE OF LID AND LOCATION OF OPENINGS IN TOP OF BOX, CALL 480-2328
7. ANY WORK BY CUSTOMER ON CITY SIDE OF METER REQUIRES PLANS BY TEXAS REGISTERED PROFESSIONAL ENGINEER.
8. WHERE THERE IS A LOOP SYSTEM, WITH MORE THEN ONE METER, APPROVED CHECK VALVES SHALL BE INSTALLED DOWNSTREAM OF THE PROPERTY OWNER'S GATE VALVE (J) AT EACH METER. BACKFLOW PREVENTERS MAY BE REQUIRED WITHIN THE SYSTEM BY THE BUILDING INSPECTION DEPT.

ACCEPTABLE
CITY OF AUSTIN STANDARD DETAIL


	TRAVIS COUNTY WATER CONTROL AND IMPROVEMENT DISTRICT No. 17 STANDARD DETAILS	STANDARD INSTALLATION DETAIL FOR 3", 4", & 6" COMPOUND METERS (2 OF 2)	
	ADOPTED: 07/01/2025	THE ARCHITECT/ENGINEER ASSUMES RESPONSIBILITY FOR APPROPRIATE USE OF THIS STANDARD.	DETAIL NO. W10

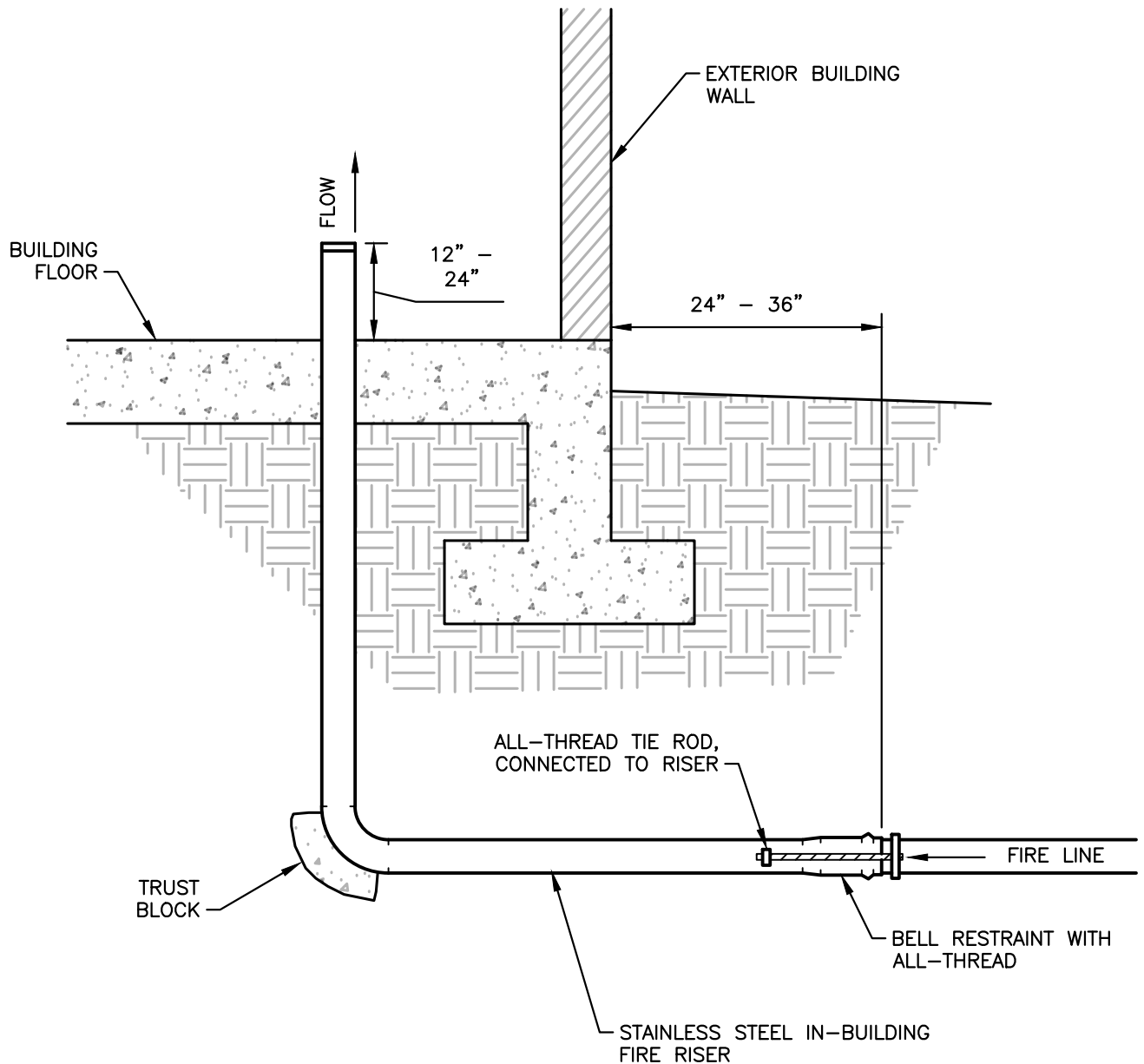


NOTES:

1. ALL MATERIALS SHALL BE LEAD FREE IN ACCORDANCE WITH THE SAFE DRINKING WATER ACT.
2. DEPENDING ON PRESSURE, IRRIGATOR SHALL DETERMINE LOCATION OF INSTALLATION EITHER BEFORE OR AFTER PRV.
3. NO PVC HIGHER THEN 21" ABOVE FINISH GRADE.

ACCEPTABLE
CITY OF AUSTIN STANDARD DETAIL


	TRAVIS COUNTY WATER CONTROL AND IMPROVEMENT DISTRICT No. 17 STANDARD DETAILS	RPZ INSTALLATION	
	ADOPTED: 07/01/2025	THE ARCHITECT/ENGINEER ASSUMES RESPONSIBILITY FOR APPROPRIATE USE OF THIS STANDARD.	DETAIL NO. W11



NOTE:

1. STAINLESS STEEL FIRE RISER TO BE COMPOSED OF A SINGLE EXTENDED 90° FITTING OF FABRICATED 304 OR 316 STAINLESS STEEL TUBING WITH WORKING PRESSURE OF 175 PSI, BY AMES FIRE AND WATERWORKS OR PRE-APPROVED EQUAL.

ACCEPTABLE
CITY OF AUSTIN STANDARD DETAIL

	<p>TRAVIS COUNTY WATER CONTROL AND IMPROVEMENT DISTRICT No. 17 STANDARD DETAILS</p>	<p>FIRE RISER</p>	
	<p>ADOPTED: 07/01/2025</p>	<p>THE ARCHITECT/ENGINEER ASSUMES RESPONSIBILITY FOR APPROPRIATE USE OF THIS STANDARD.</p>	<p>DETAIL NO. W12</p>