



WCID No. 17

Travis County



**QUINLAN PARK RD.
WATER LINE IMPROVEMENTS
PROJECT**

PROJECT IMPORTANCE

THE DEVELOPMENT THROUGHOUT STEINER RANCH HAS EXCEEDED THE ORIGINAL PROJECTIONS IN POPULATION DENSITY AND WATER USAGE.

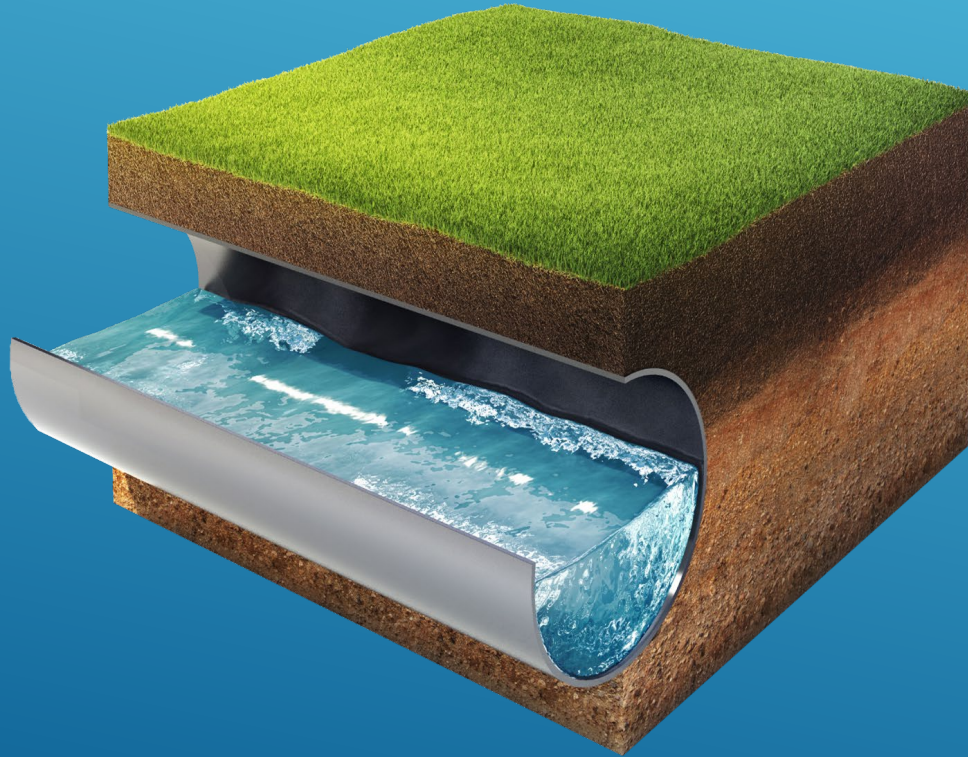


THIS RAPID GROWTH HAS CREATED WATER PRESSURE FLUCTUATION DURING PEAK FLOW TIMES (BUT STILL REMAINING ABOVE TCEQ MINIMUM).

ADDITIONALLY THERE IS A NEED TO INCREASE SYSTEM RESILIENCY FOR FIRE PROTECTION AND SYSTEM CONTINUED OPERATION IN ADVERSE CONDITIONS.



OVERALL GOAL



THIS PROJECT WILL UPGRADE THE EXISTING WATER MAIN THAT RUNS ALONG QUINLAN PARK ROAD FROM JUST NORTH OF UNIVERSITY CLUB DRIVE TO JUST NORTH OF RIVER RIDGE ELEMENTARY. THE UPGRADED WATER MAIN WILL ADDRESS THE NEED TO INCREASE SYSTEM RESILIENCY FOR FIRE PROTECTION AND SYSTEM CONTINUED OPERATION IN ADVERSE CONDITIONS, AS WELL AS PROVIDE THE NECESSARY FIRE FLOW DURING ALL CONDITIONS.

IN ADDITION TO PROVIDING A CONSTANT FLOW OF WATER PRESSURE DURING PEAK USE TIMES, AND INCREASED RESILIENCY, THE PROJECT WILL ALLOW THE STEINER RANCH SYSTEM TO OPERATE INDEPENDENTLY FROM THE SOUTHERN PORTION OF THE DISTRICT.

COMMUNITY BENEFIT



PROJECT IMPACT ON WATER PRESSURE:

1. MINIMUM PRESSURES **WILL BE INCREASED** BUT MAXIMUM PRESSURE **WILL NOT**.
2. CURRENT MINIMUM PRESSURE DURING PEAK FLOW PERIODS = APPROXIMATELY 40 psi
MINIMUM PRESSURE OF AREA WHEN FULLY DEVELOPED ***WITHOUT*** IMPROVEMENTS = APPROXIMATELY 35 psi
3. MINIMUM PRESSURE OF THE AREA **WITH** IMPROVEMENTS = APPROXIMATELY 50 psi

COMMUNITY BENEFIT



THIS MAJOR WATER LINE PROJECT
WILL HELP WITH ANOTHER OF THE
DISTRICT'S LONG TERM PLANS:

MAKING THE STEINER/COMANCHE TRAIL
AREAS CAPABLE OF BEING INDEPENDENT
OF THE REST OF WCID No. 17, FROM AN
OPERATIONAL STANDPOINT.

CURRENT PROJECTED TIMELINE

Phase 1 Implementation
May 2023



Project Completion
October 2024

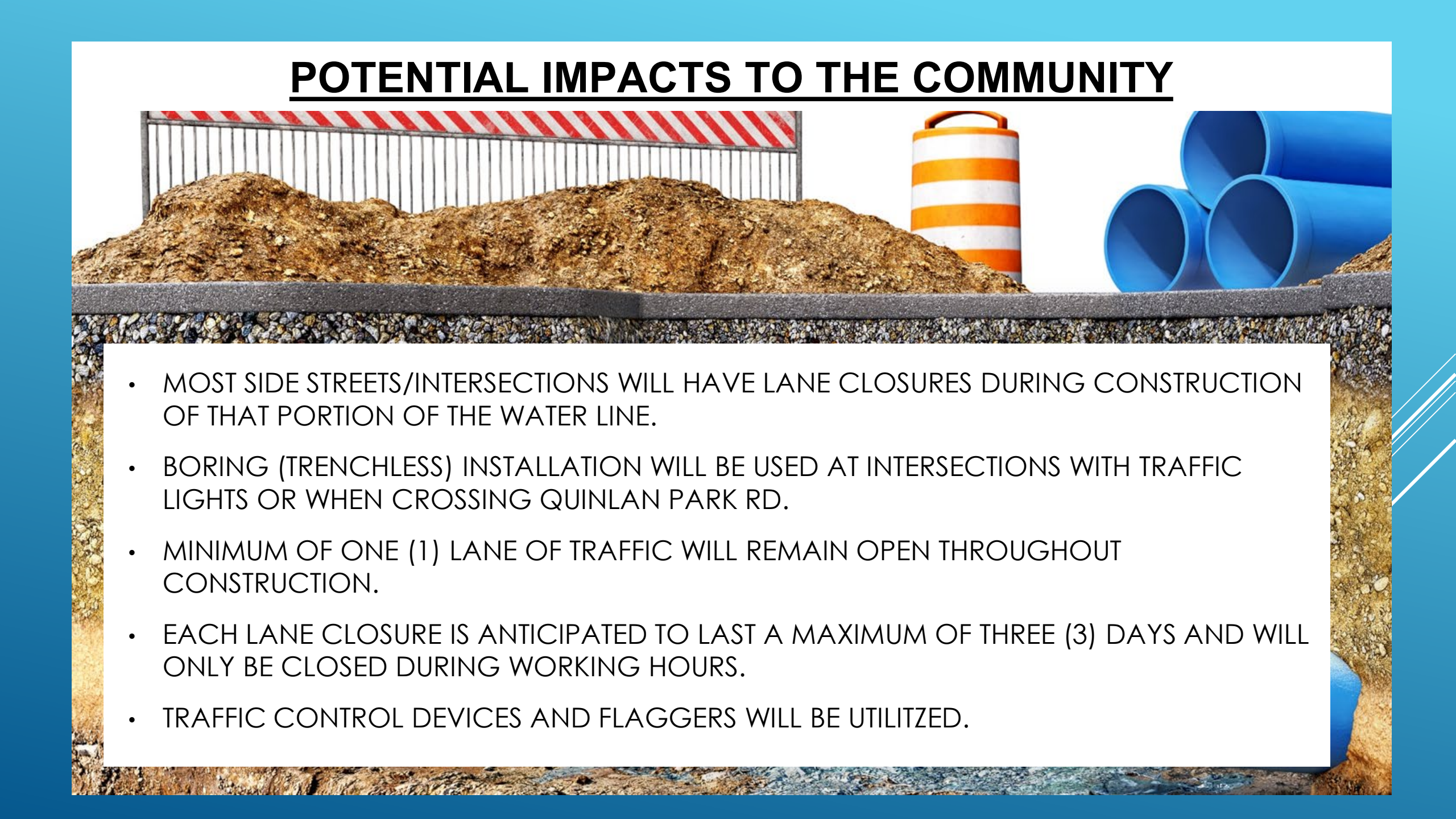


POTENTIAL IMPACTS TO THE COMMUNITY


DURING CONSTRUCTION, VEHICLE TRAFFIC MAY SEE SHORT DURATIONS OF LANE CLOSURES, SUCH AS:

- WHEN REQUIRED FOR MOVEMENT OF CONSTRUCTION EQUIPMENT.
- TURN LANES MAY BE CLOSED DURING WEEKDAY WORKING HOURS.
- SIDE STREETS/INTERSECTIONS MAY HAVE LANE CLOSURES DURING WORKDAY HOURS.

POTENTIAL IMPACTS TO THE COMMUNITY

- 
- MOST SIDE STREETS/INTERSECTIONS WILL HAVE LANE CLOSURES DURING CONSTRUCTION OF THAT PORTION OF THE WATER LINE.
 - BORING (TRENCHLESS) INSTALLATION WILL BE USED AT INTERSECTIONS WITH TRAFFIC LIGHTS OR WHEN CROSSING QUINLAN PARK RD.
 - MINIMUM OF ONE (1) LANE OF TRAFFIC WILL REMAIN OPEN THROUGHOUT CONSTRUCTION.
 - EACH LANE CLOSURE IS ANTICIPATED TO LAST A MAXIMUM OF THREE (3) DAYS AND WILL ONLY BE CLOSED DURING WORKING HOURS.
 - TRAFFIC CONTROL DEVICES AND FLAGGERS WILL BE UTILITZED.

POTENTIAL IMPACTS TO THE COMMUNITY

- 
- SOME SIDEWALK CLOSURES WILL OCCUR IN EACH PHASE.
 - SIDEWALKS ALONG AT LEAST ONE SIDE OF QUINLAN PARK ROAD WILL REMAIN OPEN THROUGHOUT THE PROJECT.
 - THIS MAY REQUIRE PEDESTRIANS TO CROSS THE STREET AT DESIGNATED CROSSWALKS.
 - CROSSWALKS AFFECTED BY BORING OPERATIONS IN PHASE 1 WILL BE CLEARLY MARKED.

EFFECT ON CROSSWALKS

BORING ACROSS INTERSECTIONS WILL BE CONDUCTED IN ORDER TO MINIMIZE THE AFFECT ON THE COMMUNITY AS WELL AS DISTURBANCES TO THE ROADWAY AND SURROUNDING VEGETATION.

THIS WILL RESULT IN CROSSWALK TRAFFIC BEING REDIRECTED AROUND THE BORE SITE SIMILAR TO THE FOLLOWING EXAMPLE.



EFFECT ON SIDEWALKS

WEST SIDE SIDEWALKS ALONG QUINLAN PARK ROAD WILL BE OPEN TO ALL PEDESTRIAN TRAFFIC WITH ONE EXCEPTION:

- During Phase III, from County Trails Lane to Central Park Drive, the west side sidewalk will be closed to pedestrian traffic.**

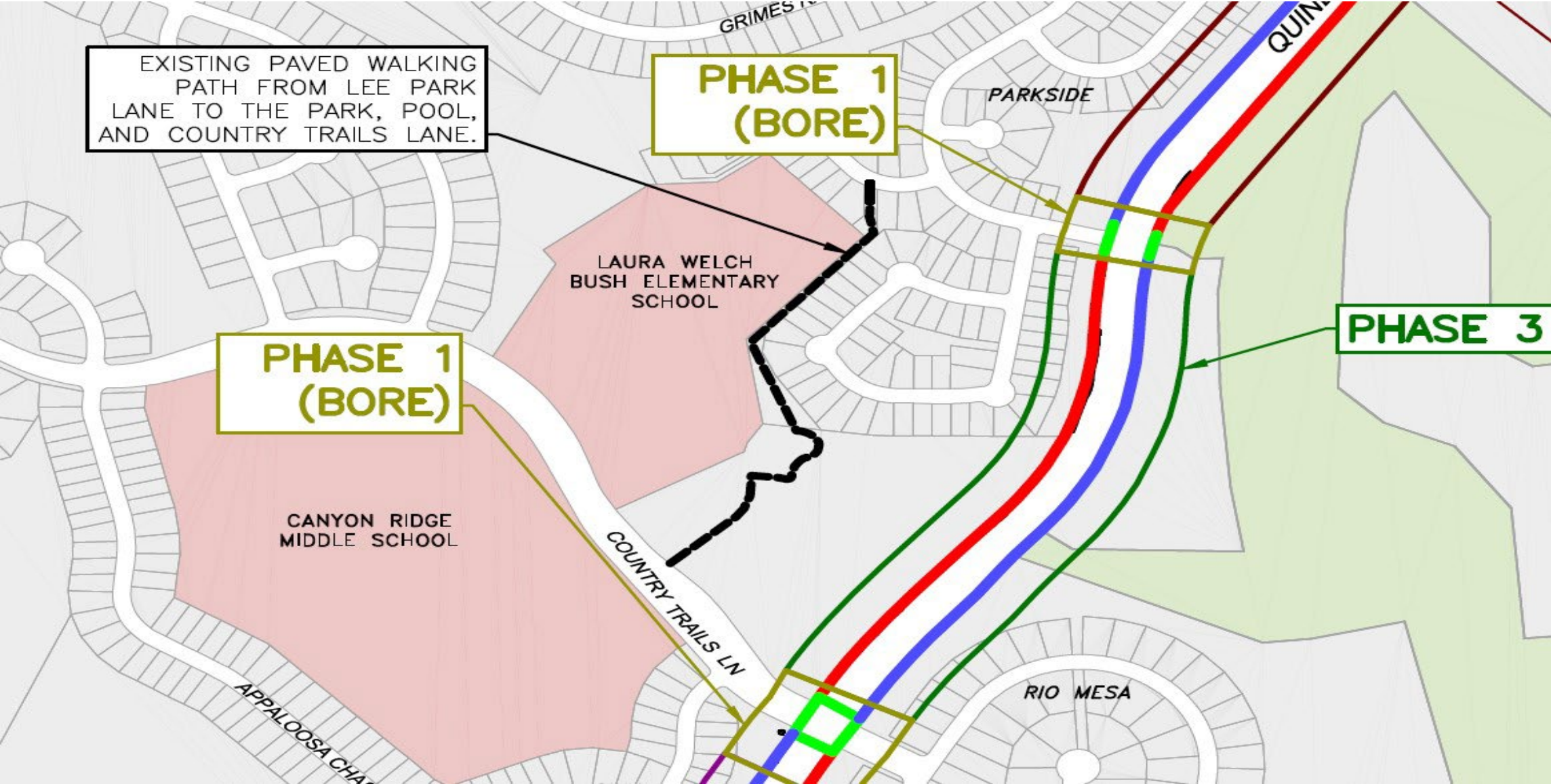
(Approximate Dates: 01/07/24 - 03/06/24)

DURING THIS TIME THE EAST SIDE SIDEWALK ALONG QUINLAN PARK ROAD WILL BE OPEN TO SUPPORT PEDESTRIAN TRAFFIC.

**** For pedestrian traffic transiting to and from Laura Bush Elementary and Canyon Ridge Middle School there is an existing paved walking path from Lee Park Lane to the park along Country Trails Lane.**

EFFECT ON SIDEWALKS

PHASE III Sidewalk arrangement and alternate walking path:



POTENTIAL IMPACTS TO COMMUNITY

TREE REMOVAL

- TREES WILL BE REMOVED ONLY AS ABSOLUTELY NECESSARY.
- WHEN NECESSARY, EACH REMOVAL WILL MEET CITY OF AUSTIN AND TRAVIS COUNTY REQUIREMENTS.

VEGETATION/LANDSCAPING

- VEGETATION & LANDSCAPING WILL BE DISTURBED BUT WILL BE REPLACED WITH EXISTING OR SIMILAR VEGETATION.



PHASE CONSTRUCTION

- SITE RESTORATION INCLUDING SIDEWALK REPAIR, PAVEMENT REPAIR, AND REVEGETATION WILL BE COMPLETED AT THE END OF EACH PHASE



CONSTRUCTION SEQUENCING

CONSTRUCTION WILL TAKE PLACE IN PHASES WHERE EACH PHASE WILL BE FULLY COMPLETED AND REVEGETATION COMPLETED PRIOR TO MOVING TO THE FOLLOWING CONSTRUCTION PHASE

- ALL TESTING, DISINFECTION AND WATER LINE CONNECTIONS, AND REVEGETATION WILL BE COMPLETED PRIOR TO MOVING ON TO THE NEXT SCHEDULED PHASE.

CONSTRUCTION SEQUENCING

1. CONSTRUCTION PHASE I

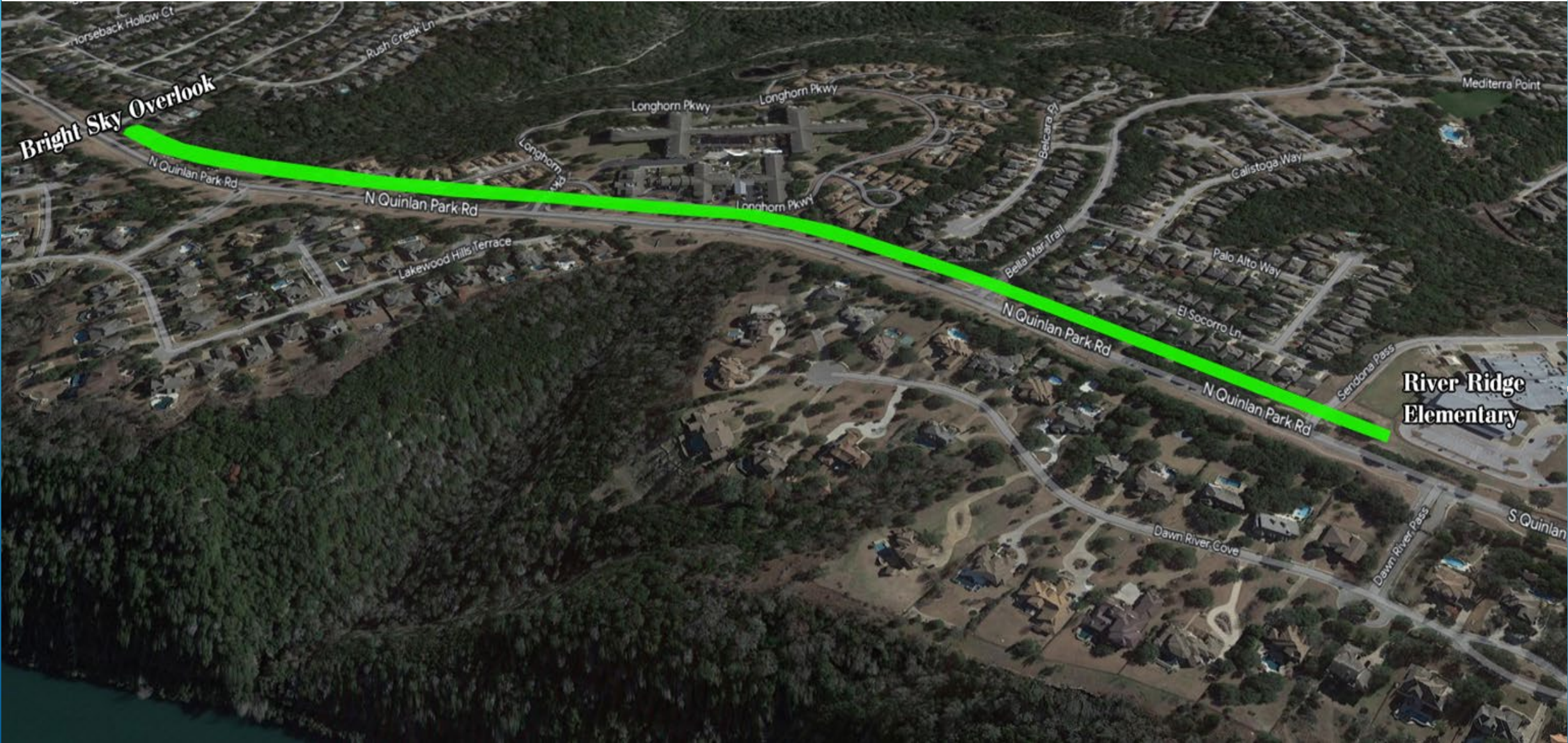
I. INTERSECTION BORES TO BE CONDUCTED:

- A. 140 FT NORTH/SOUTH FROM COUNTRY TRAILS ALONG QUINLAN DRIVE (05/16/23 – 05/30/23).
- B. 416 FT EAST/WEST AT QUINLAN DRIVE AND COUNTRY TRAILS (05/31/23 – 07/09/23).
- C. 200 FT EAST/WEST AT CENTRAL PARK AND QUINLAN DRIVE (07/10/23 – 07/31/23).
- D. 100 FT NORTH/SOUTH FROM CENTRAL PARK ALONG QUINLAN DRIVE (08/01/23 – 08/12/23).
- E. 416 FT EAST/WEST AT QUINLAN DRIVE AND UNIVERSITY CLUB DRIVE (08/13/23 – 10/01/23).

II. WATERLINE INSTALLATION:

- A. FROM RIVER RIDGE ELEMENTARY TO BRIGHT SKY OVERLOOK (05/02/23 – 09/28/23).

**PHASE I - RIVER RIDGE ELEMENTARY TO BRIGHT SKY OVERLOOK
(APPROXIMATE DATES: 05/02/23 – 09/28/23)**



CONSTRUCTION SEQUENCING

2. FOLLOW ON CONSTRUCTION PHASES

II. WATERLINE INSTALLATION WILL TAKE PLACE ALONG THE FOLLOWING:

- PHASE II

FROM BRIGHT SKY OVERLOOK TO COUNTRY TRAILS (09/29/23 – 01/06/24).

- PHASE III

FROM COUNTRY TRAILS TO CENTRAL PARK (01/07/24 – 03/06/24).

- PHASE IV

FROM CENTRAL PARK TO UNIVERSITY (03/07/24 – 05/25/24).

- PHASE V

FROM UNIVERSITY TO STEINER WWTP (05/26/24 – 08/03/24).

PHASE II - BRIGHT SKY OVERLOOK TO COUNTRY TRAILS (APPROXIMATE DATES: 09/29/23 – 01/06/24)



PHASE III - COUNTRY TRAILS TO CENTRAL PARK (APPROXIMATE DATES: 01/07/24 - 03/06/24)



PHASE IV – COUNTRY TRAIL TO UNIVERSITY (03/07/24 – 05/25/24)



PHASE V – UNIVERSITY TO STEINER WWTP (APPROXIMATE DATES: 05/26/24 – 08/03/24)



SUMMARY

- This project is a \$5.9MM investment in the future of Steiner Ranch and will upgrade the existing main water line that runs along Quinlan Park Road from University Club Drive to just north of River Ridge Elementary.
- The upgraded distribution lines will address the need to increase system resiliency for rated fire flow and continued operations in adverse conditions, ensuring the long-term viability of the Steiner Ranch system.
- In addition to providing a constant flow of water pressure during peak usage, the project will allow the Steiner Ranch system to operate independently from the southern portion of the District, significantly improving the District's operations, maintenance and its ability to respond in emergencies.
- The District anticipates a 17-month water line construction schedule that will commence in May of 2023 and be completed in October of 2024.

QUESTIONS?

