

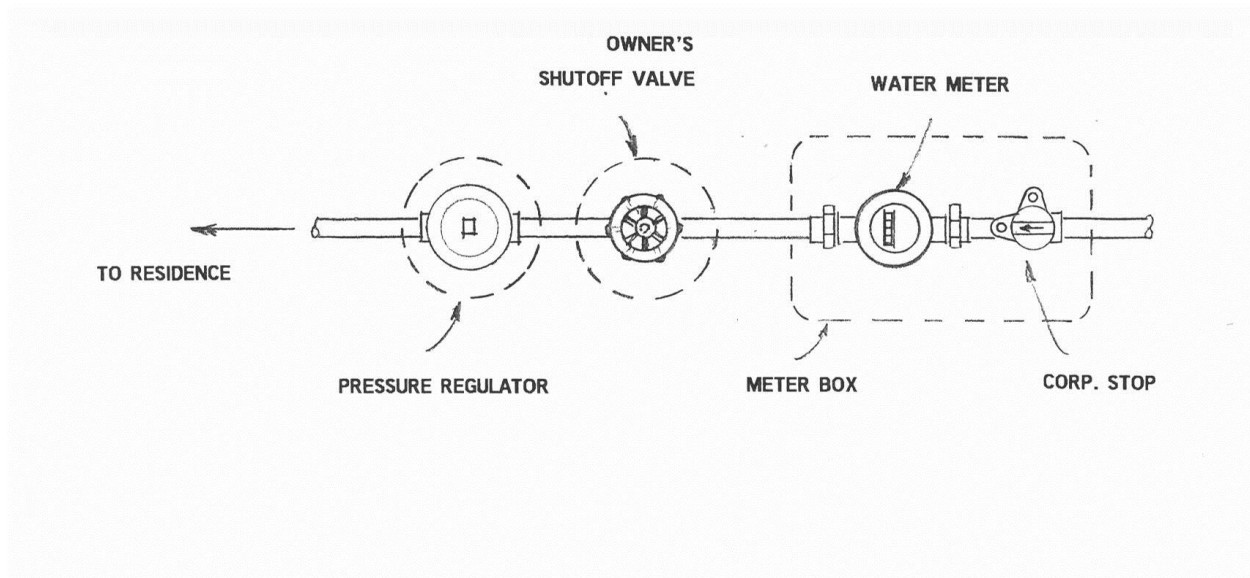
Tip from WCID 17

How Do I Shut My Water Off?

Take a few minutes to familiarize yourself with your water supply shutoff valve. If an emergency situation ever develops in the future, where a leak in your home system may cause damage, you need to act quickly to stop the flow before you call a plumber.

Most residences are served from water mains located in the street right-of-way. Near your property line at one of your side property lines, will be a meter box with a lid that is set flush with the ground. Your water meter and a corp stop valve between the water main and the meter are inside. The corp stop and meter are not intended to be used by the property owner. Immediately adjacent to the meter box is a customer shutoff valve below ground level. There should also be a pressure regulator next. The customer shutoff is the valve you should identify now, so you can close it to shutoff your water if it becomes necessary.

Where irrigation systems are installed, other valves are usually found in a separate box. A schematic sketch of a typical residential set-up is shown below. If you do not have a customer shutoff valve, you should have your plumber install one so that you can shut your water off if you need to.



Each home is designed individually by the builder/plumber. You will want to familiarize yourself with the location and type of valves you have prior to any emergency.