

**MATERIALS LIST:**

- |  |  |
|--|--|
| <p>1. WYE – SIZE AS REQUIRED</p> <p>2. 2" PVC SCH 80 PIPE</p> <p>3. 2" RESILIENT WEDGE GATE VALVE</p> <p>4. 2" PVC SCH 80 45° BEND</p> <p>5. 2" PVC SCH 80 WYE (OMIT FOR SINGLE SERVICE)</p> <p>6. PLASTIC METER BOX WITH CAST IRON LID</p> <p>7. 2"x1 1/4" PVC SCH 80 REDUCER</p> <p>8. 1 1/4" PVC SCH 80 THREADED</p> <p>9. 1 1/4" STAINLESS STEEL CHECK VALVE ASSEMBLY (UNI-LATERAL AS MANUFACTURED BY E-ONE)</p> | <p>10. 1 1/4"x13" THREADED STAINLESS STEEL HOSE (TT5-6201 SERIES AS MANUFACTURED BY PROCO)</p> <p>11. 1 1/4" PVC SCH 80 PIPE</p> <p>12. 1 1/4" DRESSER COUPLING</p> <p>13. 1 1/4" x 1 1/4" PLAIN END, 6" LONG, THREAD</p> <p>14. 1 1/4" PVC SCH 80 PLUG (TO BE REMOVED BY OWNER UPON SERVICE LINE EXTENSION AND INSTALLATION OF GRINDER PUMP STATION)</p> <p>15. PIPE SUPPORTS</p> |
|--|--|



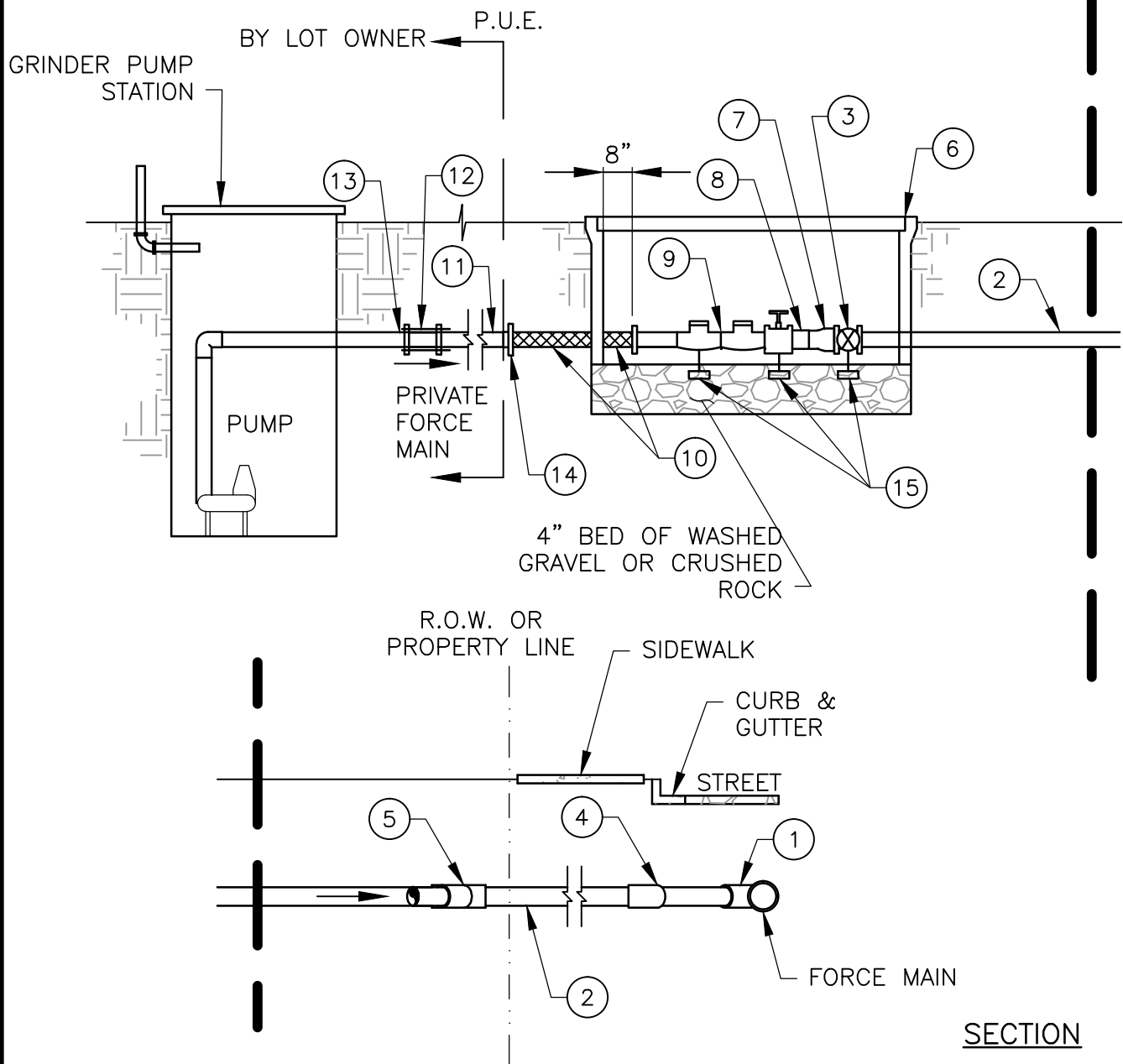
TRAVIS COUNTY WATER CONTROL AND IMPROVEMENT DISTRICT No. 17  
STANDARD DETAILS

ADOPTED:  
03/01/2016

TYPICAL RESIDENTIAL WASTEWATER PRESSURE SEWER SERVICE DETAIL  
(1 OF 2)

THE ARCHITECT/ENGINEER ASSUMES RESPONSIBILITY FOR APPROPRIATE USE OF THIS STANDARD.

DETAIL NO.  
**WW27**



NOTES:

1. LOCATE VALVE BOXES WITHIN 10' P.U.E. AND WITHIN 5' OF LOT CORNER PIN, WHERE FEASIBLE.
2. INSTALL PLASTIC VALVE VAULTS ON 3/8" CRUSHED ROCK OR PEA GRAVEL PAD—MINIMUM 4" DEPTH BELOW VAULT, EXTENDING UPWARD TO PIPE SPRING LINE, AND COMPACTED TO 95% STD PROCTOR.
3. MINIMUM DEPTH OF COVER FOR SERVICES = 24". (TYPICAL DEPTH AT VALVES)
4. EXTENSION OF 1 1/4" SERVICE LINE AND INSTALLATION OF GRINDER PUMP SHALL BE FURNISHED BY LOT OWNERS.
5. LOT OWNERS SHALL GRANT ACCESS TO PRIVATE CONTRACTORS AS REQUIRED BY WCID NO. 17 FOR EMERGENCY MAINTENANCE OF GRINDER PUMP STATION.



TRAVIS COUNTY WATER CONTROL AND  
IMPROVEMENT DISTRICT No. 17  
STANDARD DETAILS

ADOPTED:

03/01/2016

TYPICAL RESIDENTIAL WASTEWATER  
PRESSURE SEWER SERVICE DETAIL  
(2 OF 2)

THE ARCHITECT/ENGINEER ASSUMES  
RESPONSIBILITY FOR APPROPRIATE  
USE OF THIS STANDARD.

DETAIL NO.

WW27