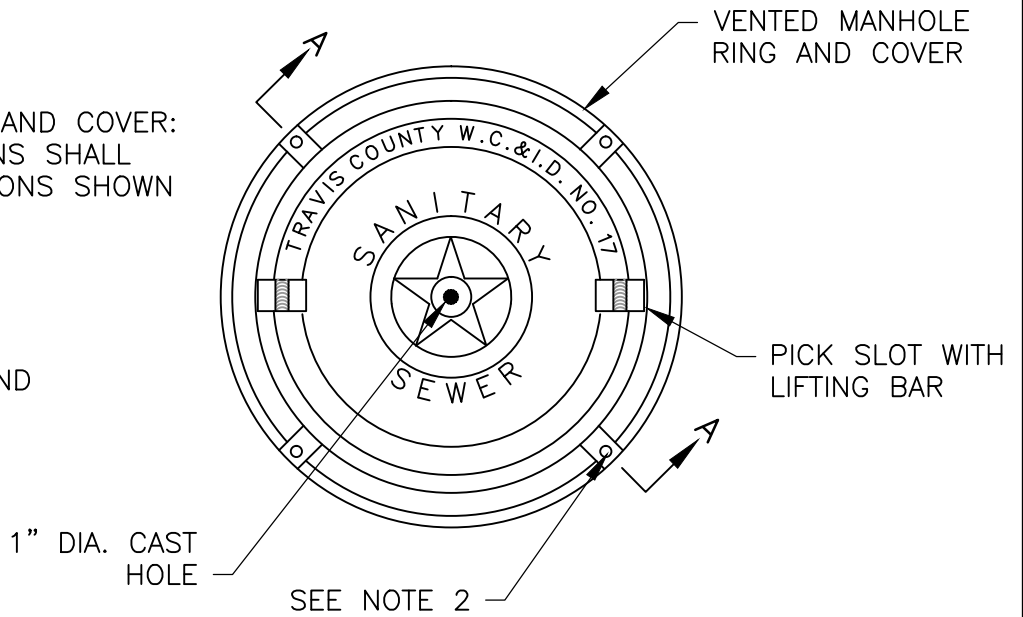


NOTES:

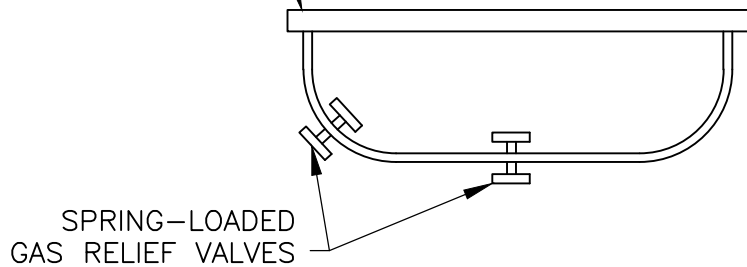
STANDARD MANHOLE RING AND COVER:
ALL APPLICABLE DIMENSIONS SHALL
CONFORM TO THE DIMENSIONS SHOWN
HERE

NOTES:

THE BEARING SURFACES AND
O-GROOVE SHALL BE
MACHINE GROUND

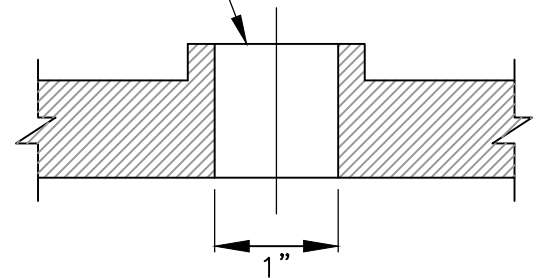


SLOTS OR HOLES MAY BE CUT IN LIP
OF INSERT TO PROVIDE ACCESS FOR
BOLTS IN WATERTIGHT LIDS



**WATERTIGHT MANHOLE
INSERT DETAIL**

TOP OF VENT HOLE TO
BE SAME HEIGHT AS
ADJACENT RIBS



**VENTED HOLE DETAIL
SECTION A-A**

NOTE:

1. MANHOLE COVER INSERTS SHALL BE FRW INDUSTRIE, INC., "INFLOW PROTECTOR-COVER", PRECO INDUSTRIES, LTD., "SEWER GUARD", OR APPROVED EQUAL, AND SHALL BE INSTALLED IN STRICT ACCORDANCE WITH THE MANUFACTURER'S RECOMMENDATIONS. THE CONTRACTOR SHALL BE RESPONSIBLE FOR MAKING THE NECESSARY FIELD MEASUREMENTS FOR THE MANUFACTURER PRIOR TO PRODUCTION.
2. BOLTS SHALL BE 5/8" X 1 3/7" X 11 N.C. STAINLESS STEEL HEX HEAD (TYPE 316).

	TRAVIS COUNTY WATER CONTROL AND IMPROVEMENT DISTRICT No. 17 STANDARD DETAILS	VENTED MANHOLE RING AND COVER DETAIL	
	ADOPTED: 03/01/2016	THE ARCHITECT/ENGINEER ASSUMES RESPONSIBILITY FOR APPROPRIATE USE OF THIS STANDARD.	DETAIL NO. WW19