

BYPASS
 REQUIRED FOR ALL COMMERCIAL BUILDING WATER SERVICE.
 (NOTE: BYPASS NOT ALLOWED WHERE METER IS FOR IRRIGATION)



TRAVIS COUNTY WATER CONTROL AND IMPROVEMENT DISTRICT No. 17
 STANDARD DETAILS

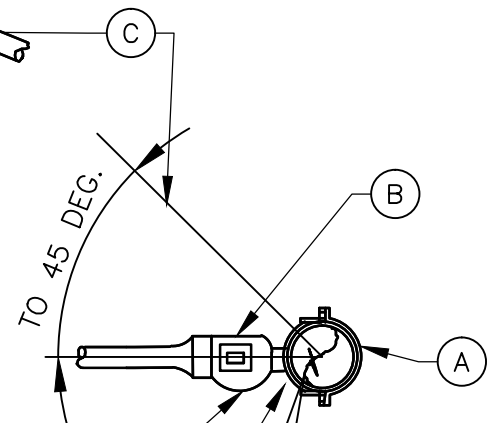
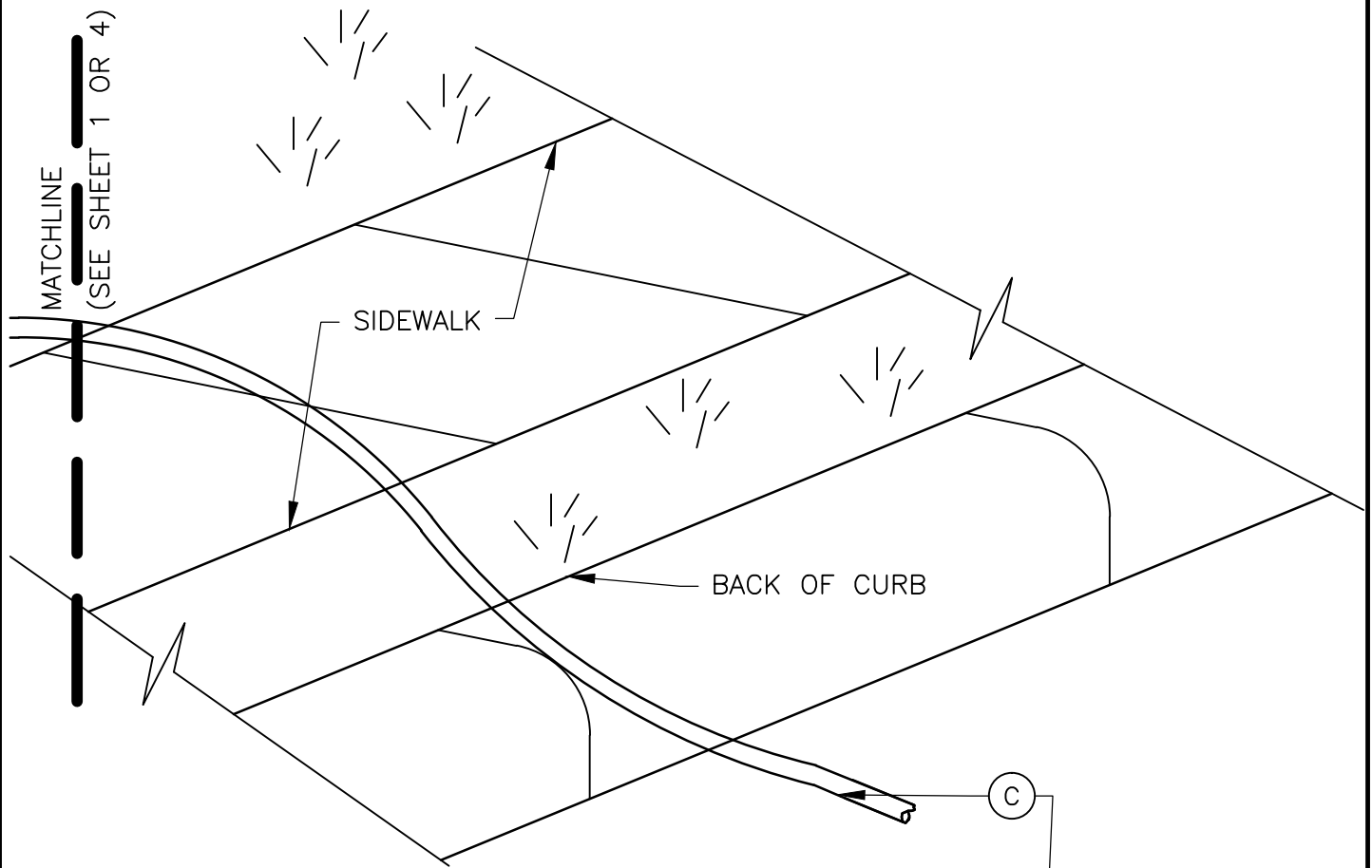
ADOPTED:
 03/01/2016

(ONE) 1" OR 2" METER INSTALLATION SHOWING OPTIONAL BYPASS
 (1 OF 4)

THE ARCHITECT/ENGINEER ASSUMES RESPONSIBILITY FOR APPROPRIATE USE OF THIS STANDARD.

DETAIL NO.
W09

MATCHLINE
(SEE SHEET 1 OR 4)



CORPORATION STOP SHALL BE
INSTALLED SO THAT OPERATION
NUT IS LOCATED ON THE SIDE.

WATER MAIN

VIEW ROTATED
FOR CLARITY



TRAVIS COUNTY WATER CONTROL AND
IMPROVEMENT DISTRICT No. 17
STANDARD DETAILS

ADOPTED:
03/01/2016


(ONE) 1" OR 2" METER INSTALLATION
SHOWING OPTIONAL BYPASS
(2 OF 4)

THE ARCHITECT/ENGINEER ASSUMES
RESPONSIBILITY FOR APPROPRIATE
USE OF THIS STANDARD.

DETAIL NO.
W09


MATERIALS LIST		METER SIZE	
		1-1/2"	2"
A	TAP SADDLE FOR CONNECTION – ON ALL PIPES (317-D5)	1-1/2"	2"
B	CORPORATION STOP – SERVICE PIPE OUTLET	1-1/2"	2"
C	SERVICE PIPE, POLY E SDR 9, INSERTS REQUIRED (200 PSI)	1-1/2"	2"
D	COUPLING: SERVICE PIPE TO MAIL I.P.T. (COMPRESSION FITTING)	1-1/2"	2"
E	BALL VALVE, SEE SPL WW 275	1-1/2"	2"
F	TEES, BRASS.	1-1/2" X 1-1/2" X 1"	2" X 2" X 1"
G	CLOSE-NIPPLE, BRASS	1-1/2"	2"
H	ANGLE METER STOP, FEMALE I.P. THREAD INLET X FLANGE OUTLET	1-1/2"	2"
I	WATER METER LENGTH WITH GASKETS	13"	17"
J	FLANGE, BRASS, FEMALE I.P. THREAD	1-1/2"	2"
K	NIPPLES, BRASS	1-1/2" X 8"	1" X 5"
L	CUSTOMER'S BALL VALVE, SEE SPL WW 275	1-1/2"	2"
M	NIPPLES, BRASS	1" X 5"	1" X 5"
N	90 DEGREE ELBOWS, BRASS	1"	1"
O	NIPPLES, BRASS	1" X 3"	1" X 3"
P	CURB STOP, BRASS, FEMALE I.P. THREAD BOTH ENDS WITH LOCK NUTS	1"	1"
Q	COUPLINGS, BRASS, SERVICE PIPE TO MALE THREAD	1"	1"
R	SERVICE PIPE (BRASS OR SDR 9 200 P.S.I. POLY)	1"	1"
S	ROUND METER BOX 34P14 WESTERN IRON WORKS WITH CAST IRON LID AND RING. SPECIFY SIZE OF HOLE FOR TOUCH READ PAD 2" X 2-1/8"		
T	BRONZE GATE VALVE: NON RISING STEM 1.5" OR 2"		
V	BRASS PIPE, (4' MINIMUM LENGTH) FROM METER TO CUSTOMER YARD LINE		
W	PRESSURE REDUCING VALVE (PVR)	1-1/2"	0'-2"

**NO COPPER PIPE ALLOWED. ONLY BRASS AND/OR POLYETHYLENE SHALL BE USED.
ALL MATERIALS SHALL BE LEAD FREE IN ACCORDANCE THE SAFE DRINKING WATER ACT.**

	TRAVIS COUNTY WATER CONTROL AND IMPROVEMENT DISTRICT No. 17 STANDARD DETAILS	(ONE) 1" OR 2" METER INSTALLATION SHOWING OPTIONAL BYPASS (3 OF 4)	
	ADOPTED: 03/01/2016	THE ARCHITECT/ENGINEER ASSUMES RESPONSIBILITY FOR APPROPRIATE USE OF THIS STANDARD.	DETAIL NO. W09

NOTES:

1. TOP OF BOXES SHALL BE 2" ABOVE THE CURB AND OR FINISHED GRADE OR FLUSH WITH PAVEMENT SURFACE.
2. IF TWO METERS ARE INSTALLED WITH A SINGLE SERVICE LINE, THEY SHALL BE INSTALLED IN SEPARATE BOXES WITH PIPING AS SHOWN FROM A TEE. THE COMMON SERVICE LINE TO THE TEE SHALL BE 2" FOR TWO 1-1/2" METERS, OR 4" DUCTILE IRON PIPE FOR TWO 2" METERS.
3. WATER SERVICE LINES SHALL BE BEDDED IN WASHED SAND OR APPROVED GRAVEL BEDDING TO PROVIDE SIX (6") INCHES OF CUSHION BELOW THE LINE, AND 12" ABOVE. WATER METERS SHALL BE INSTALLED IN GROUND WHICH HAS AN ELEVATION NO HIGHER THEN 4 FEET FROM FINISHED GRADE STREET LEVEL. METERS LOCATED ON HIGH GROUND OR UPON STEEP SLOPES ARE NOT PERMITTED. TRENCH BOTTOM AND WALLS SHALL BE CLEARED OF ALL PROTRUDING ROCKS WHICH COULD DAMAGE THE PIPE BEFORE THE SAND BEDDING IS PLACED. WASHED SAND SHALL BE FILLED TO THE SAME ELEVATION AS THE ADJACENT CURB AND/OR EDGE OF PAVEMENT AND SHALL BE COMPACTED TO A PROCTOR DENSITY OF 90%. NO ROCKS OR OTHER MATERIAL OVER THREE INCHES (3") IN DIAMETER SHALL BE USED FOR BACK FILL OVER THE SAND.
4. METER BOX MUST BE BEHIND CURB AND/OR SIDEWALK AND OUT OF VEHICULAR TRAFFIC AREA.
5. THE BOTTOM OF THE WATER SERVICE AT ALL POINTS SHALL BE AT LEAST TWELVE (12") INCHES ABOVE THE TOP OF THE WASTEWATER SERVICE LINES.
6. WATER SERVICE LINES SHALL BE INSTALLED WITH WATER TIGHT JOINTS TESTED TO 200 P.S.I. 10 MIN. 150 P.S.I. FOR 1 HOUR.
7. ISOLATION VALVES WILL NOT BE SET UNDER OR NEAR SIDEWALK OR CURB WHERE THEY CANNOT BE LOCATED.
8. PRESSURE REDUCING VALVE AND A BACK FLOW PREVENTER (WITH THERMAL EXPANSION TANK IN HOUSE) IF REQUIRED IN THAT ORDER ON THE YARD LINE.

	TRAVIS COUNTY WATER CONTROL AND IMPROVEMENT DISTRICT No. 17 STANDARD DETAILS	(ONE) 1" OR 2" METER INSTALLATION SHOWING OPTIONAL BYPASS (4 OF 4)	
	ADOPTED: 03/01/2016	THE ARCHITECT/ENGINEER ASSUMES RESPONSIBILITY FOR APPROPRIATE USE OF THIS STANDARD.	DETAIL NO. W09