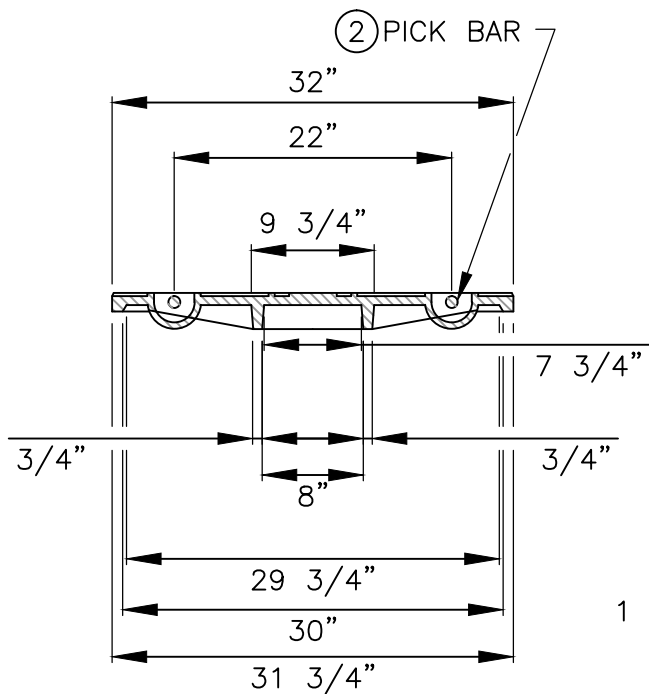
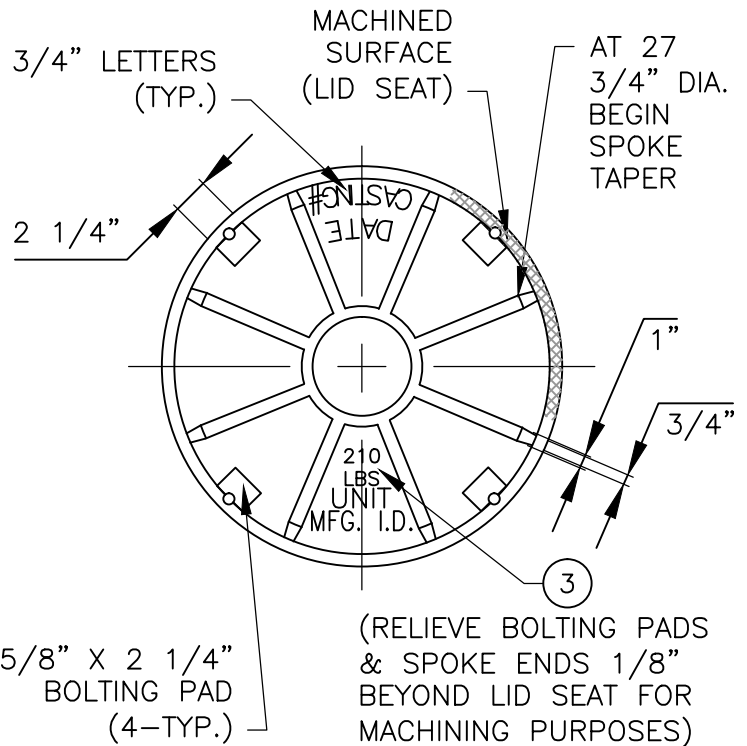


LID PLAN VIEW



LID SECTION VIEW



LID BOTTOM VIEW



TRAVIS COUNTY WATER CONTROL AND IMPROVEMENT DISTRICT No. 17
STANDARD DETAILS

ADOPTED:
03/01/2016

WATERTIGHT MANHOLE RING AND 32" COVER
(1 OF 3)

THE ARCHITECT/ENGINEER ASSUMES RESPONSIBILITY FOR APPROPRIATE USE OF THIS STANDARD.

DETAIL NO.
WW16

4 - GUSSETS AT 90°
(TYP.)

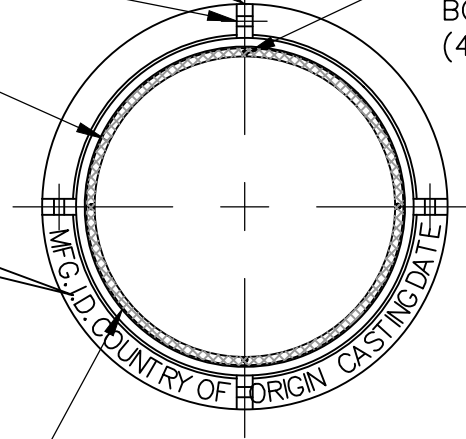
5/8" MIN. (TYP.)

1 3/8" DIA.
LEFT HOLE

5/8" THREADED
BOLT HOLES
(4-TYP.)

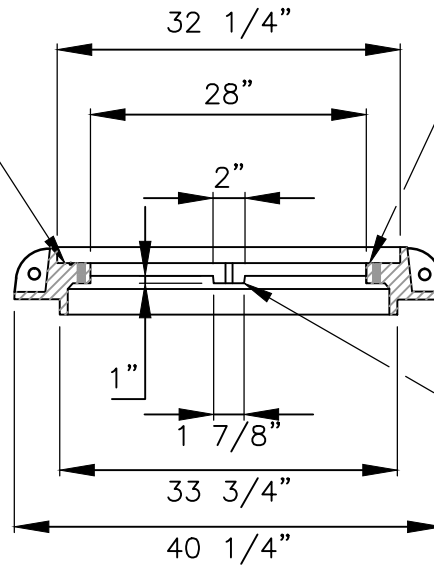
MACHINED
SURFACE

3/4" LETTERS
- MFG. LOGO
- DATE
- COUNTRY OF ORIGIN



MANHOLE RING

5/16" O-RING IN A 1/4" GROOVE ON A 31 3/8" CIRCLE

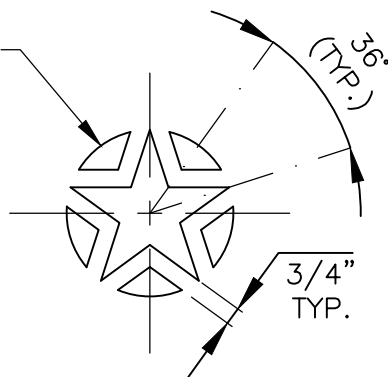


MACHINED SURFACE

BOLTING LUG
(4 TYP.)

RING SECTION

3 1/2" RADIUS



STAR LAYOUT



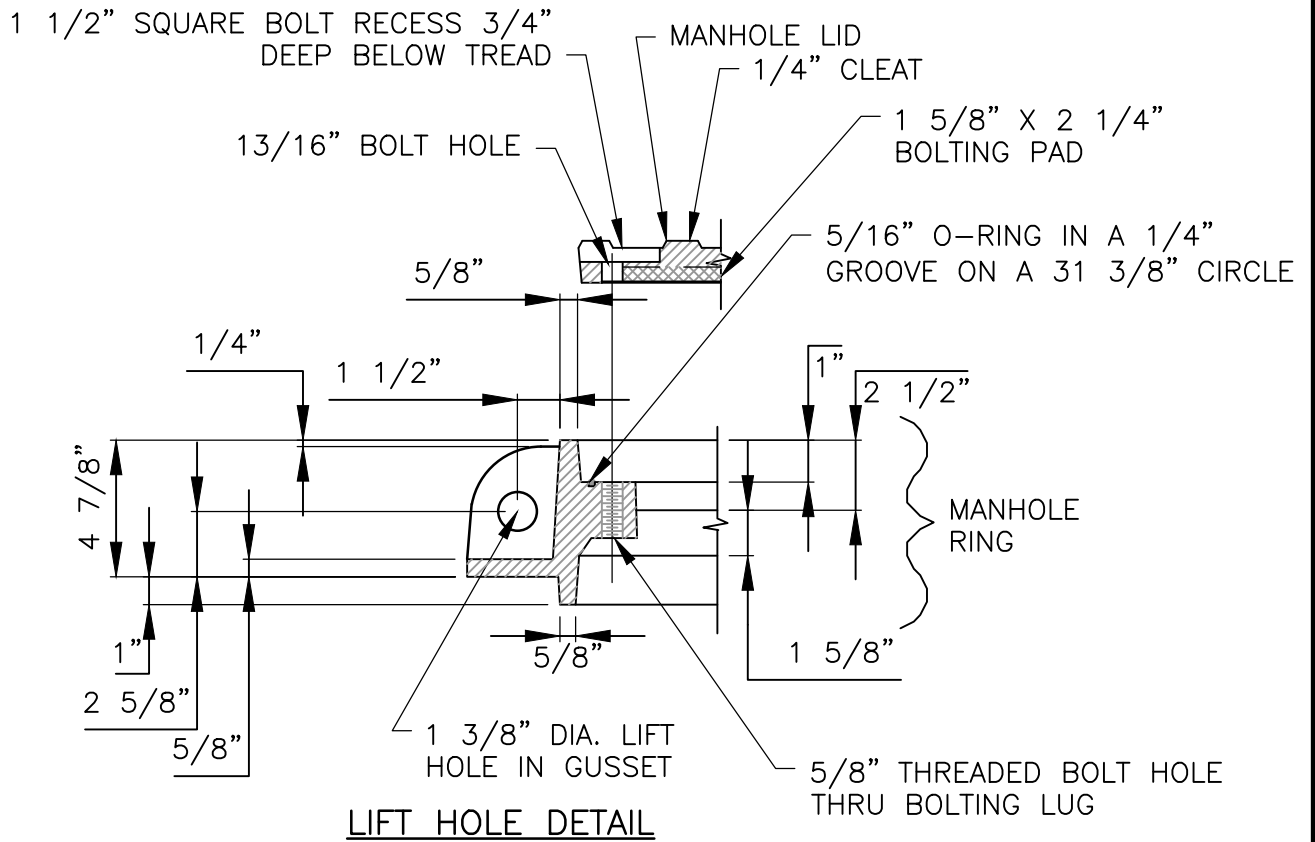
TRAVIS COUNTY WATER CONTROL AND
IMPROVEMENT DISTRICT No. 17
STANDARD DETAILS

WATERTIGHT MANHOLE RING
AND 32" COVER
(2 OF 3)

ADOPTED:
03/01/2016

THE ARCHITECT/ENGINEER ASSUMES
RESPONSIBILITY FOR APPROPRIATE
USE OF THIS STANDARD.

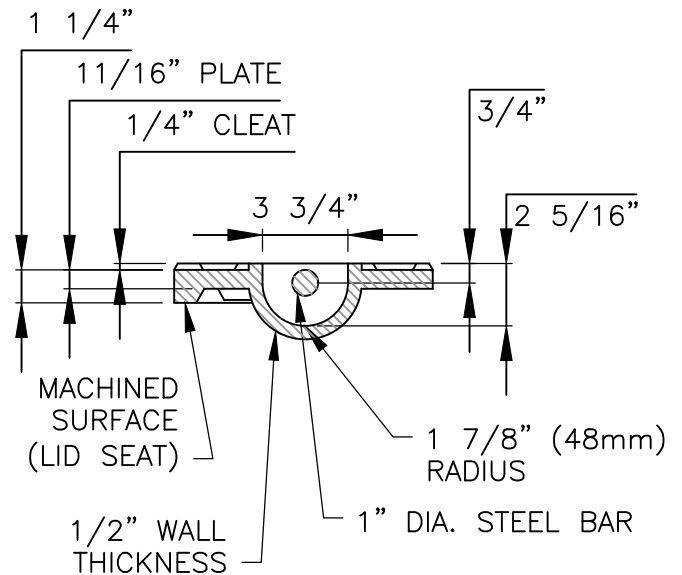
DETAIL NO.
WW16




LIFT HOLE DETAIL

NOTES:

1. ALL CORNERS AND EDGES SHALL HAVE A 1/16" MINIMUM RADIUS.
2. LIDS SHALL BE CAST WITH TWO 1" DIA. STEEL PICK BARS.
3. LID WEIGHTS SHALL BE 210 LBS. FOR CAST IRON OR 175 LBS. FOR DUCTILE IRON. WEIGHT SHALL BE CAST ON BOTH TOP AND BOTTOM OF LID.
4. MANUFACTURER SHALL PROVIDE INDEPENDENT TESTING LABORATORY REPORT ON 25,000 POUND PROOF LOAD TEST CONDUCTED ACCORDING TO AASHTO M-306. (40,000 POUND FOR TxDOT RIGHT-OF-WAY).
5. FILLETS SHALL BE 1/4" RADIUS UNLESS OTHERWISE SPECIFIED.
6. MANUFACTURER SHALL REMOVE EXCESS IRON AND MACHINE FINISH SEATING SURFACES TO NOTED DIMENSIONS.
7. BOLTS SHALL BE 5/8" X 1 3/7" X 11 N.C. STAINLESS STEEL HEX HEAD (TYPE 316).



PICK BAR DETAIL

	TRAVIS COUNTY WATER CONTROL AND IMPROVEMENT DISTRICT No. 17 STANDARD DETAILS	WATERTIGHT MANHOLE RING AND 32" COVER (3 OF 3)	
	ADOPTED: <p style="text-align: center;">03/01/2016</p>	THE ARCHITECT/ENGINEER ASSUMES RESPONSIBILITY FOR APPROPRIATE USE OF THIS STANDARD.	DETAIL NO. <p style="text-align: center;">WW16</p>