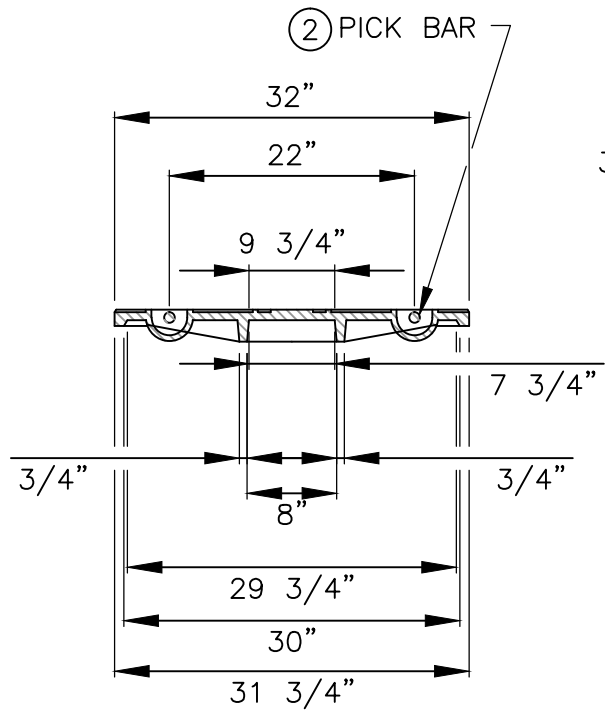
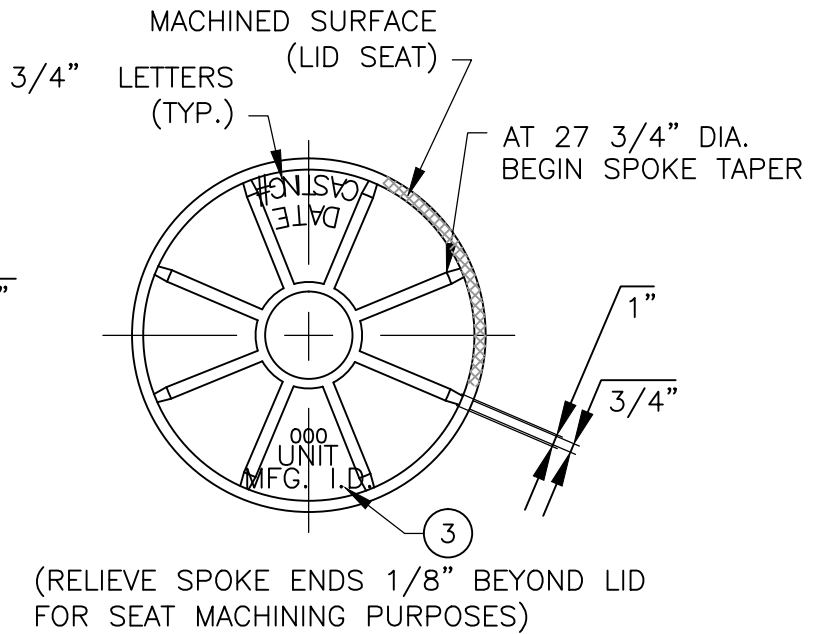


LID PLAN VIEW



LID SECTION VIEW



LID BOTTOM VIEW



TRAVIS COUNTY WATER CONTROL AND IMPROVEMENT DISTRICT No. 17
STANDARD DETAILS

SANITARY SEWER MANHOLE RING AND 32" COVER
(1 OF 3)

ADOPTED:
03/01/2016

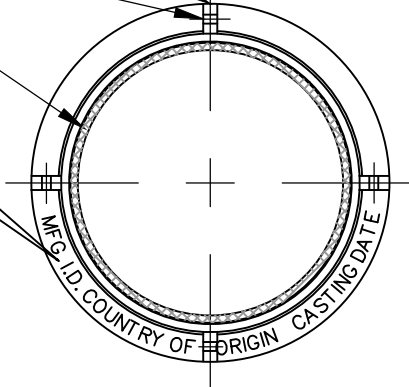
THE ARCHITECT/ENGINEER ASSUMES RESPONSIBILITY FOR APPROPRIATE USE OF THIS STANDARD.

DETAIL NO.
WW15

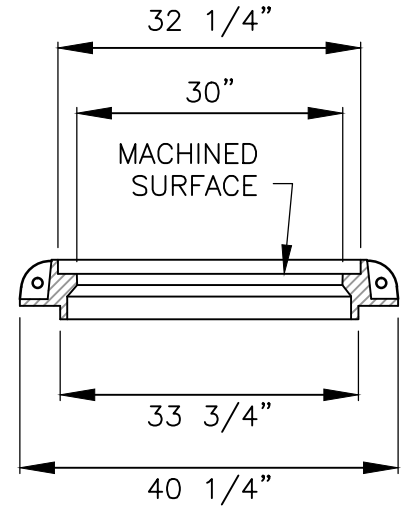
4-GUSSETS AT 90° (TYP.)
 5/8" MIN. (TYP.)
 1 3/8" DIA. LIFT HOLE

MACHINED SURFACE

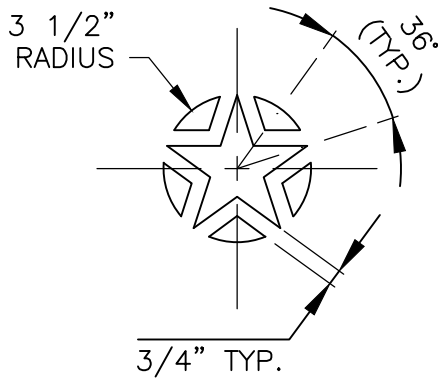
- 3/4" LETTERS
- MFG. LOGO
 - DATE
 - COUNTRY OF ORIGIN



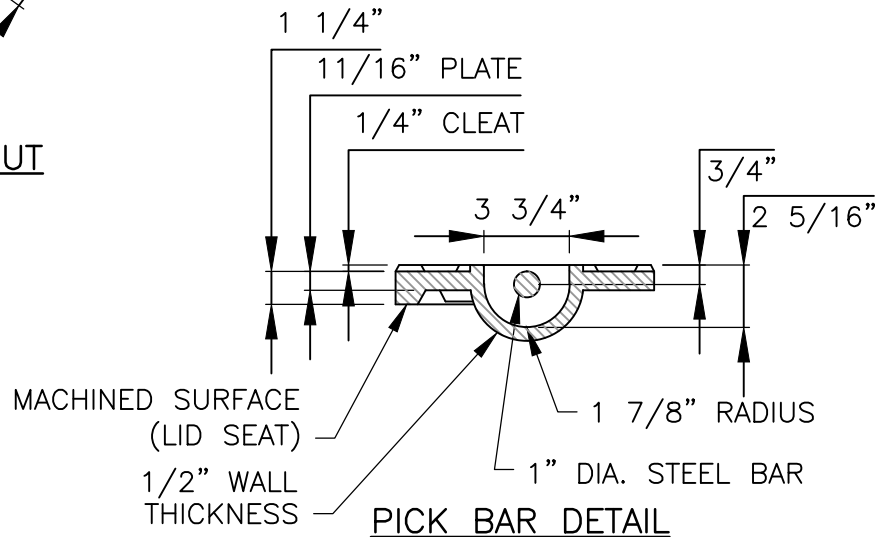
MANHOLE RING



RING SECTION



STAR LAYOUT



PICK BAR DETAIL



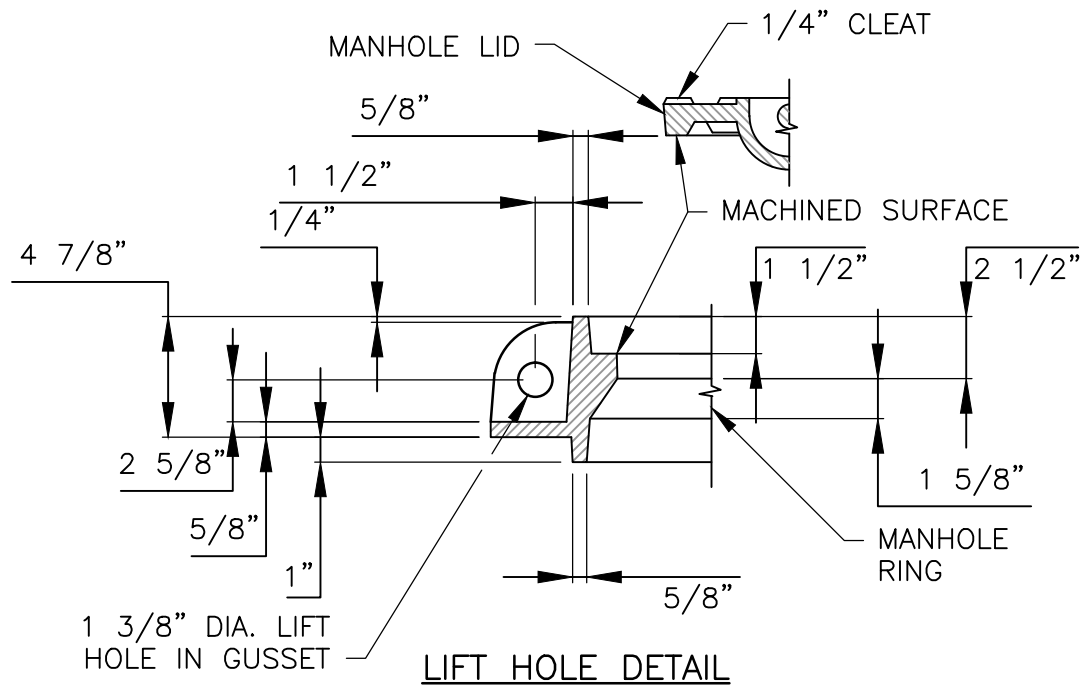
TRAVIS COUNTY WATER CONTROL AND IMPROVEMENT DISTRICT No. 17
 STANDARD DETAILS

ADOPTED:
 03/01/2016

SANITARY SEWER MANHOLE RING AND 32" COVER
 (2 OF 3)

THE ARCHITECT/ENGINEER ASSUMES RESPONSIBILITY FOR APPROPRIATE USE OF THIS STANDARD.

DETAIL NO.
WW15



NOTES:

1. ALL CORNERS AND EDGES SHALL HAVE A 1/16" MINIMUM RADIUS.
2. LIDS SHALL BE CAST WITH TWO 1" DIA. STEEL PICK BARS.
3. LID WEIGHTS SHALL BE 210 LBS. FOR CAST IRON OR 175 LBS. FOR DUCTILE IRON. WEIGHT SHALL BE CAST ON BOTH TOP AND BOTTOM OF LID.
4. MANUFACTURER SHALL PROVIDE INDEPENDENT TESTING LABORATORY REPORT ON 25,000 POUND PROOF LOAD TEST CONDUCTED ACCORDING TO AASHTO M-306.
5. FILLETS SHALL BE 1/4" RADIUS UNLESS OTHERWISE SPECIFIED.
6. MANUFACTURER SHALL REMOVE EXCESS IRON AND MACHINE FINISH SEATING SURFACES TO NOTED DIMENSIONS.
7. BOLTS SHALL BE 5/8" X 1 3/7" X 11 N.C. STAINLESS STEEL HEX HEAD (TYPE 316).

| | | | |
|--|--|---|---------------------------|
| | TRAVIS COUNTY WATER CONTROL AND IMPROVEMENT DISTRICT No. 17 STANDARD DETAILS | SANITARY SEWER MANHOLE RING AND 32" COVER (3 OF 3) | |
| | ADOPTED: 03/01/2016 | THE ARCHITECT/ENGINEER ASSUMES RESPONSIBILITY FOR APPROPRIATE USE OF THIS STANDARD. | DETAIL NO. WW15 |